

APP CRS 323°	Rwy Idg TDZE Apt Elev	N/A N/A 6882
------------------------	-----------------------------	---

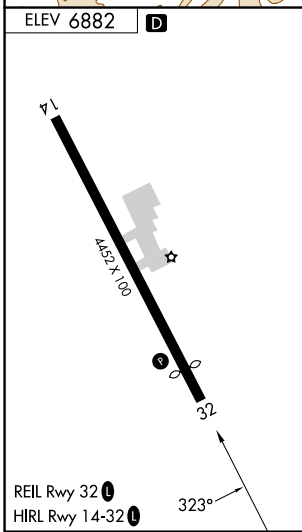
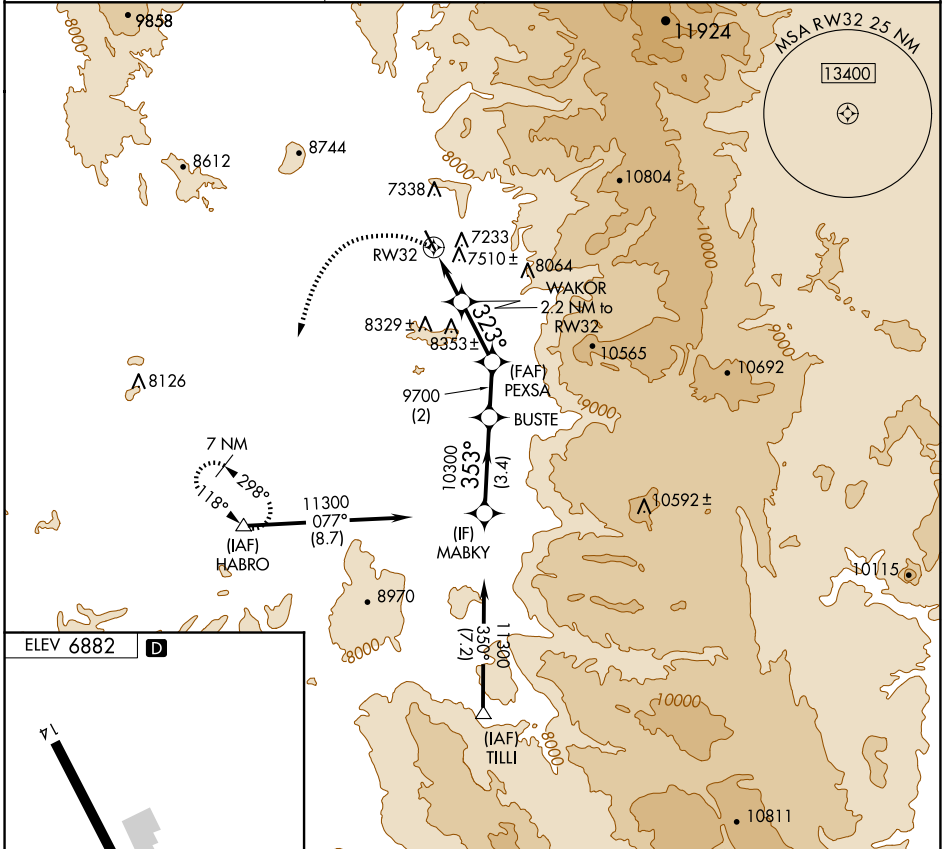
RNAV (GPS)-E

STEAMBOAT SPRINGS/BOB ADAMS FLD (SBS)

▼ Circling NA northeast of Rwy 14-32.
▲ NA
☒ -26°C
 DME/DME RNP- 0.3 NA.
 When local altimeter setting not received, use Yampa Valley altimeter setting and increase all MDA 80 feet.

MISSED APPROACH: Climbing left turn to 11300 direct HABRO and hold, continue climb-in-hold to 11300.

AWOS-3 118.325	DENVER CENTER 120.475 235.975	UNICOM 122.8 (CTAF) 0
--------------------------	---	---------------------------------



11300	HABRO	VGSI and descent angles not coincident (VGSI Angle 4.00/TCH 40).	MABKY
			BUSTE
			PEXSA
			WAKOR 2.2 NM to RW32
			RW32
			9700
			10300
			11300
			Procedure Turn NA
			2.2 NM
			2.4 NM
			2 NM
			3.4 NM
CATEGORY	A	B	C
	8140-1¼	8140-1½	NA
☑ CIRCLING	1258 (1300-1¼)	1258 (1300-1½)	NA

SW-1, 23 JAN 2025 to 20 FEB 2025

SW-1, 23 JAN 2025 to 20 FEB 2025