

WAAS CH 81836 W05A	APP CRS 054°	Rwy Idg TDZE 255 Apt Elev 270	5500
--	------------------------	---	-------------

RNAV (GPS) RWY 5

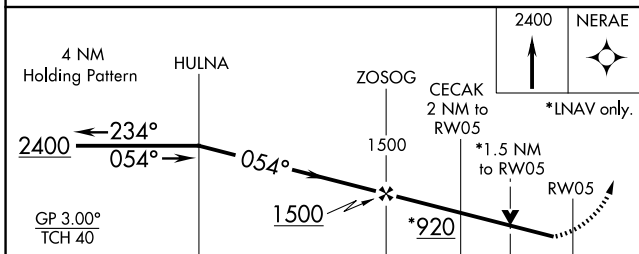
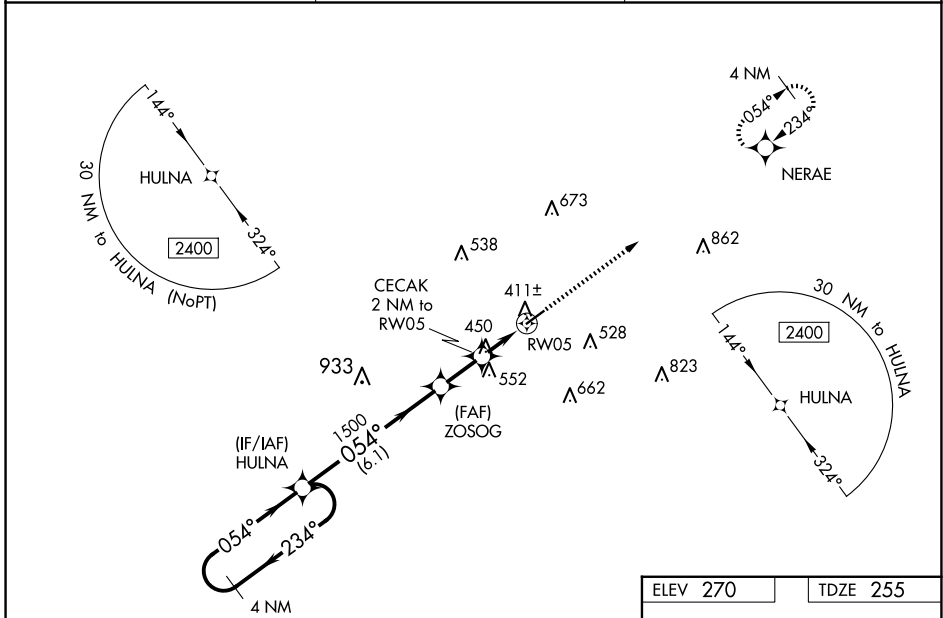
COLUMBIA/MARION COUNTY (ØRØ)

RNP APCH - GPS.

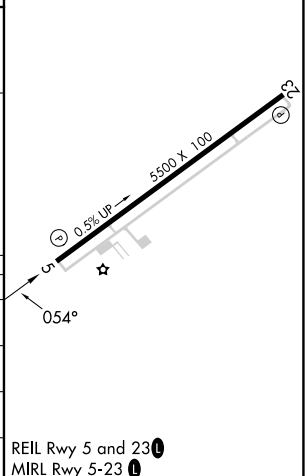
▼ **NA** For uncompensated Baro-VNAV systems, LNAV/VNAV NA below -15°C or above 54°C.
 When local altimeter setting not received, use Hattiesburgh/Laurel Rgnl altimeter setting and increase all DA 66 feet and all MDA 80 feet; increase LPV all Cats visibility 1/8 mile and LNAV/VNAV all Cats and Circling Cat C visibilities 1/4 mile, increase Circling Cat D visibility 1/2 mile, increase LNAV Cat C and D visibility 3/8 mile. VDP and Baro-VNAV NA when using Hattiesburgh/Laurel Rgnl altimeter setting. Rwy 5 helicopter visibility reduction below 3/4 SM NA.

MISSED APPROACH:
Climb to 2400 direct NERAE and hold.

AWOS-3PT 120.675	HOUSTON CENTER 126.8 327.8	UNICOM 122.8 (CTAF) Ø
----------------------------	--------------------------------------	---------------------------------



ELEV 270	TDZE 255
----------	----------



CATEGORY	A	B	C	D
LPV DA	505-7/8		250 (300-7/8)	
LNAV/VNAV DA	743-1 5/8		488 (500-1 5/8)	
LNAV MDA	760-1	505 (500-1)	760-1 3/8	505 (500-1 3/8)
C CIRCLING	760-1 490 (500-1)	820-1 550 (600-1)	920-1 3/4 650 (700-1 3/4)	1000-2 1/4 730 (800-2 1/4)

REIL Rwy 5 and 23 Ø
MIRL Rwy 5-23 Ø

SC-4, 23 JAN 2025 to 20 FEB 2025

SC-4, 23 JAN 2025 to 20 FEB 2025