

NDB/DME ROR <b>371</b>	APP CRS <b>087°</b>	Rwy ldg <b>7200</b> TDZE <b>177</b> Apt Elev <b>177</b>
Chan <b>104 (115.7)</b>		

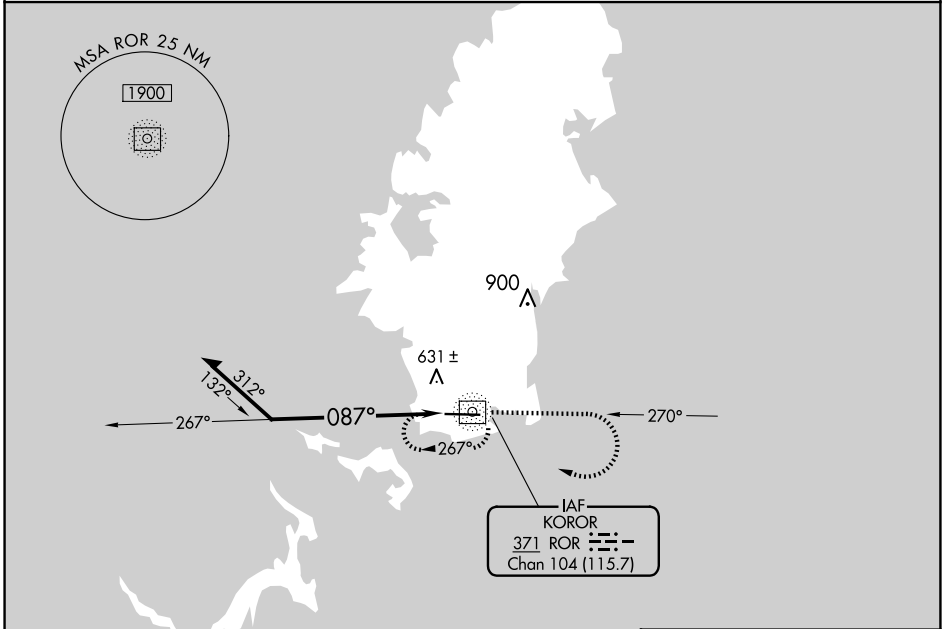
# NDB RWY 9

PALAU INTL (ROR)(PTRO)

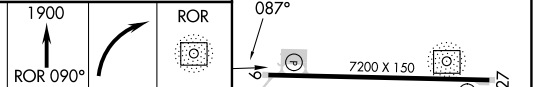
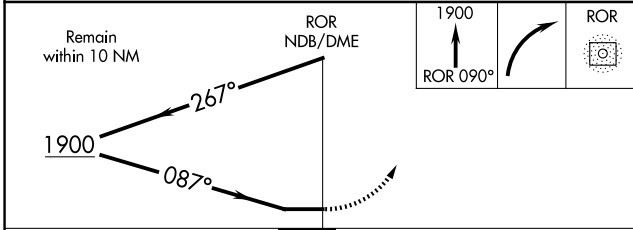
- ▼ Circling NA north of Rwy 9-27.
- ▲ Rwy 9 helicopter visibility reduction below 3/4 SM NA. Obtain local altimeter setting on CTAF; when not received, procedure NA. No controlled airspace below 5500.

MISSED APPROACH: Climb to 1900 on ROR bearing 090° then right turn direct ROR NDB/DME and hold.

KOROR RADIO  
**123.6 (CTAF)**



ELEV 177	TDZE 177
----------	----------



CATEGORY	A	B	C	D
S-9	1000-1 823 (900-1)	1000-1¼ 823 (900-1¼)	1000-2½	823 (900-2½)
CIRCLING	1000-1¼	823 (900-1¼)	1000-2½ 823 (900-2½)	1000-2¾ 823 (900-2¾)

MRL Rwy 9-27  
REIL Rws 9 and 27

PAC, 26 DEC 2024 to 20 FEB 2025

PAC, 26 DEC 2024 to 20 FEB 2025