

APP CRS **270°**
 Rwy Idg **7200**
 TDZE **176**
 Apt Elev **177**

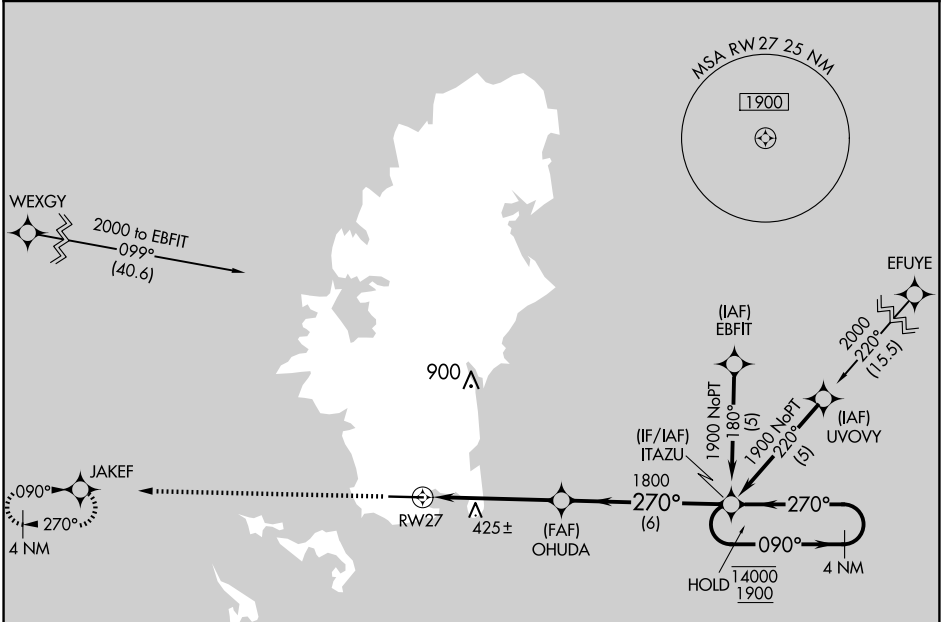
RNAV (GPS) RWY 27
 PALAU INTL (ROR)(PTRO)

RNP APCH-GPS.

▼ Circling NA north of Rwy 9-27.
▲ Rwy 27 helicopter visibility reduction below 3/4 SM NA.
 Obtain local altimeter setting on CTAF; when not received,
 procedure NA. No controlled airspace below 5500.

MISSED APPROACH: Climb to 1900 direct JAKEF and hold.

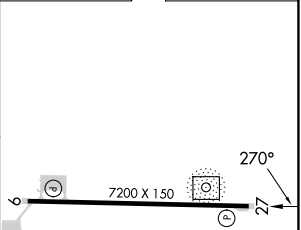
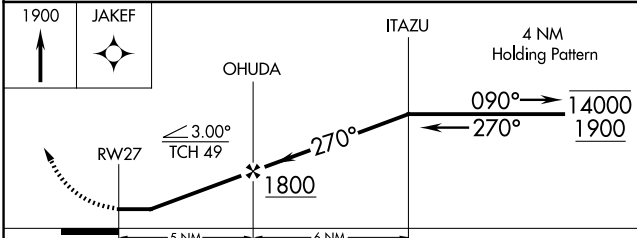
KOROR RADIO
123.6 (CTAF) 0



PAC, 26 DEC 2024 to 20 FEB 2025

PAC, 26 DEC 2024 to 20 FEB 2025

ELEV 177	TDZE 176
----------	----------



CATEGORY	A	B	C	D
LNAV MDA	680-1	504 (600-1)	680-1 3/8	504 (600-1 3/8)
C CIRCLING	700-1 523 (600-1)	760-1 583 (600-1)	780-1 3/4 603 (700-1 3/4)	780-2 603 (700-2)

MIRL Rwy 9-27 **0**
 REIL Rwy 9 and 27