

WAAS CH <b>78238</b> <b>W17A</b>	APP CRS <b>174°</b>	Rwy Idg TDZE Apt Elev	<b>4149</b> <b>1232</b> <b>1232</b>
--	------------------------	-----------------------------	---

# RNAV (GPS) RWY 17

GEORGE L SCOTT MUNI (3Y2)

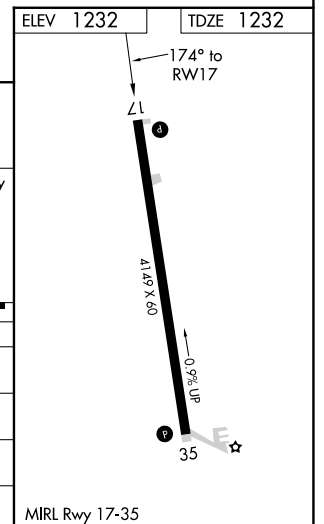
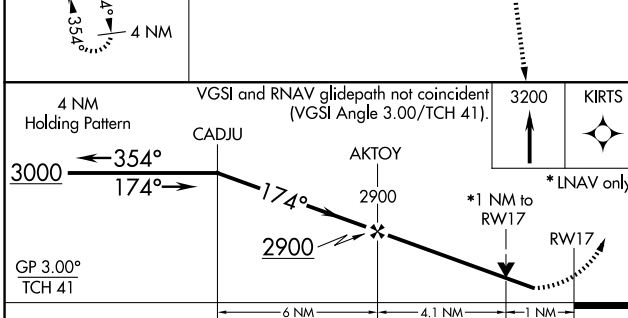
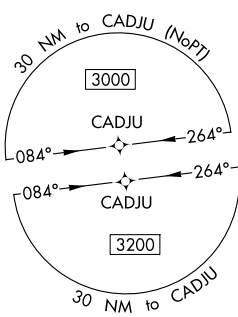
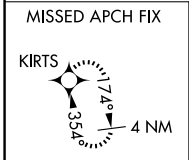
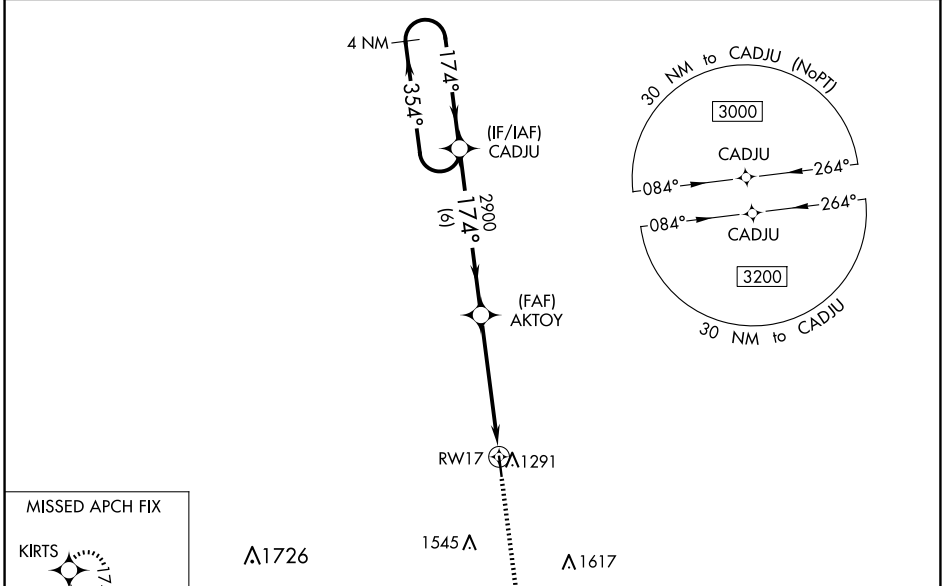
**RNP APCH.**

**NA** For uncompensated Baro-VNAV systems, LNAV/VNAV NA below -17°C (2°F) or above 54°C (130°F). Baro-VNAV and VDP NA when using DecoraH altimeter setting. Helicopter visibility reduction below ¾ SM NA. Obtain local altimeter setting on CTAF; when not received, use DecoraH altimeter setting and increase LPV and LNAV/VNAV DA to 1533 all Cats, increase all MDA 60 feet, and LNAV Cat C visibility ½ mile.

**MISSED APPROACH:**  
Climb to 3200 direct KIRTS and hold.

MINNEAPOLIS CENTER **118.85**

UNICOM **122.8 (CTAF)**



CATEGORY	A	B	C	D
LPV DA	1482-1	250 (300-1)		NA
LNAV/VNAV DA	1482-1	250 (300-1)		NA
LNAV MDA	1580-1	348 (400-1)		NA
<b>C</b> CIRCLING	1740-1	508 (600-1)	1860-1¾ 628 (700-1¾)	NA

NC-3, 23 JAN 2025 to 20 FEB 2025

NC-3, 23 JAN 2025 to 20 FEB 2025