

WAAS CH <b>58301</b> <b>W18A</b>	APP CRS <b>178°</b>	Rwy Idg <b>6000</b> TDZE <b>447</b> Apt Elev <b>447</b>
--	------------------------	---

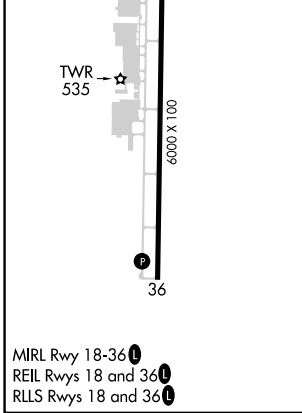
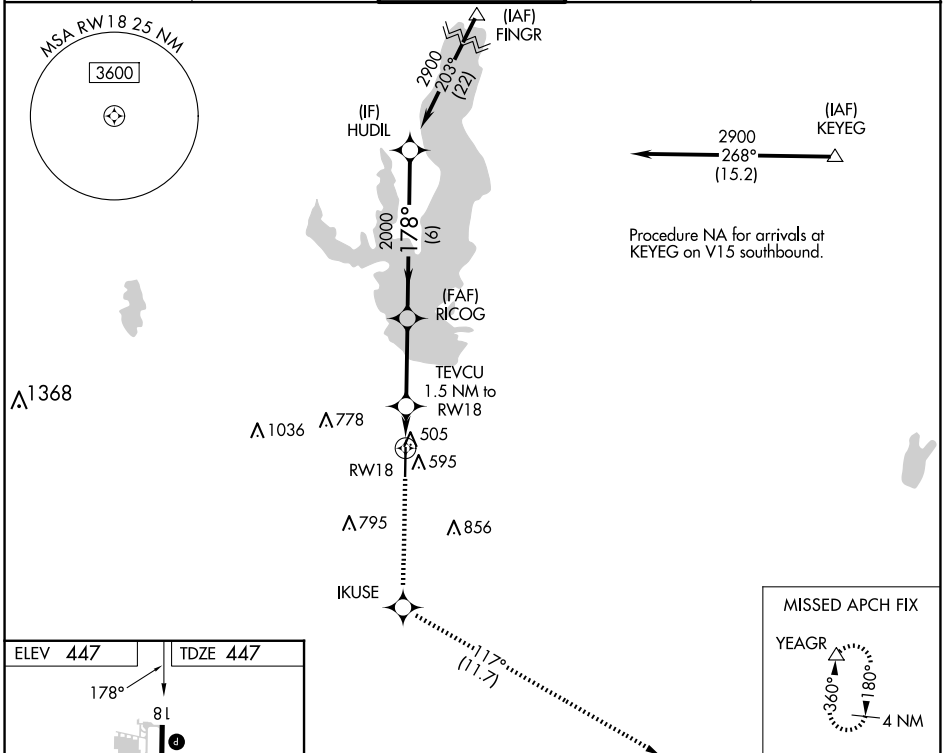
# RNAV (GPS) RWY 18

MESQUITE METRO (HQZ)

**⚠** DME/DME RNP-0.3 NA. When local altimeter setting not received, use Dallas Love Fld altimeter setting and increase all DA/MDA 60 feet. Increase LPV all Cats visibility to 1 mile, LNAV Cat C visibility to 1 3/8 and Circling Cat C visibility to 2 1/4. Helicopter visibility reduction below 3/4 SM NA.

MISSED APPROACH: Climb to 3000 direct IKUSE then on track 117° to YEAGR and hold.

AWOS-3 <b>118.175</b>	LONE STAR APP CON <b>125.2 343.65</b>	MESQUITE TOWER★ <b>120.3</b> (CTAF) <b>0</b>	GND CON <b>118.85</b>	UNICOM <b>123.05</b>
--------------------------	--	---	--------------------------	-------------------------



3000	IKUSE	tr 117°	YEAGR	HUDIL
*LNAV only.				
RWY18		TEVCU 1.5 NM to RWY18	RICOG 2000	HUDIL 2900
1.5 NM		3.1 NM	6 NM	GP 3.00° TCH 56
CATEGORY	A	B	C	D
LPV DA	697-3/4 250 (300-3/4)			NA
LNAV MDA	860-1	413 (500-1)	860-1 1/8 413 (500-1 1/8)	NA
<b>C</b> CIRCLING	960-1	513 (600-1)	1160-2 713 (800-2)	NA

MESQUITE, TEXAS  
Amdt 1A 25JUN15

32°45'N-96°32'W

MESQUITE METRO (HQZ)  
**RNAV (GPS) RWY 18**

SC-2, 23 JAN 2025 to 20 FEB 2025

SC-2, 23 JAN 2025 to 20 FEB 2025