

**TOP ALTITUDE:
ASSIGNED BY ATC**

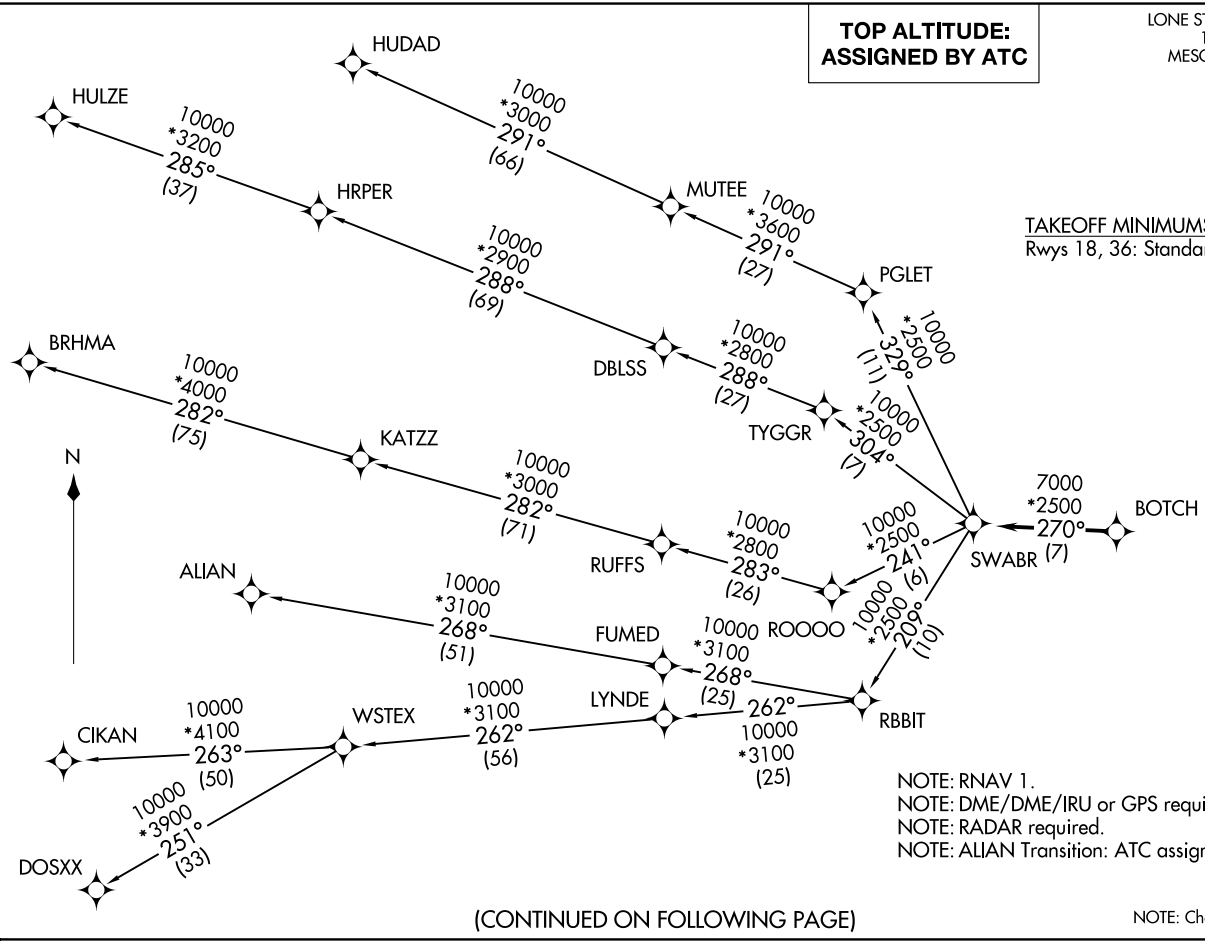
LONE STAR DEP CON
125.2 343.65
MESQUITE TOWER★
120.3 (CTAF)

TAKEOFF MINIMUMS
Rwys 18, 36: Standard.

(SWABR1 .SWABR) 24305
SWABR ONE DEPARTURE (RNAV)

AL-6444 (FAA)

MESQUITE METRO (HQZ)
MESQUITE, TEXAS



NOTE: RNAV 1.
NOTE: DME/DME/IRU or GPS required.
NOTE: RADAR required.
NOTE: ALIAN Transition: ATC assigned only.

(CONTINUED ON FOLLOWING PAGE)

NOTE: Chart not to scale.

SWABR ONE DEPARTURE (RNAV)
(SWABR1 .SWABR) 24MAR22

MESQUITE, TEXAS
MESQUITE METRO (HQZ)

SWABR ONE DEPARTURE (RNAV)



DEPARTURE ROUTE DESCRIPTION

When entering controlled airspace, fly heading assigned by ATC, expect vectors to BOTCH, then on track 270° to SWABR, then on assigned transition. Maintain ATC assigned altitude, expect filed altitude 10 minutes after departure.

ALIAN TRANSITION (SWABR1 .ALIAN)

BRHMA TRANSITION (SWABR1 .BRHMA)

CIKAN TRANSITION (SWABR1 .CIKAN)

DOSXX TRANSITION (SWABR1 .DOSXX)

HUDAD TRANSITION (SWABR1 .HUDAD)

HULZE TRANSITION (SWABR1 .HULZE)

WSTEX TRANSITION (SWABR1 .WSTEX)

SC-2, 23 JAN 2025 to 20 FEB 2025

SC-2, 23 JAN 2025 to 20 FEB 2025