

RNAV 1 - DME/DME/IRU or GPS.

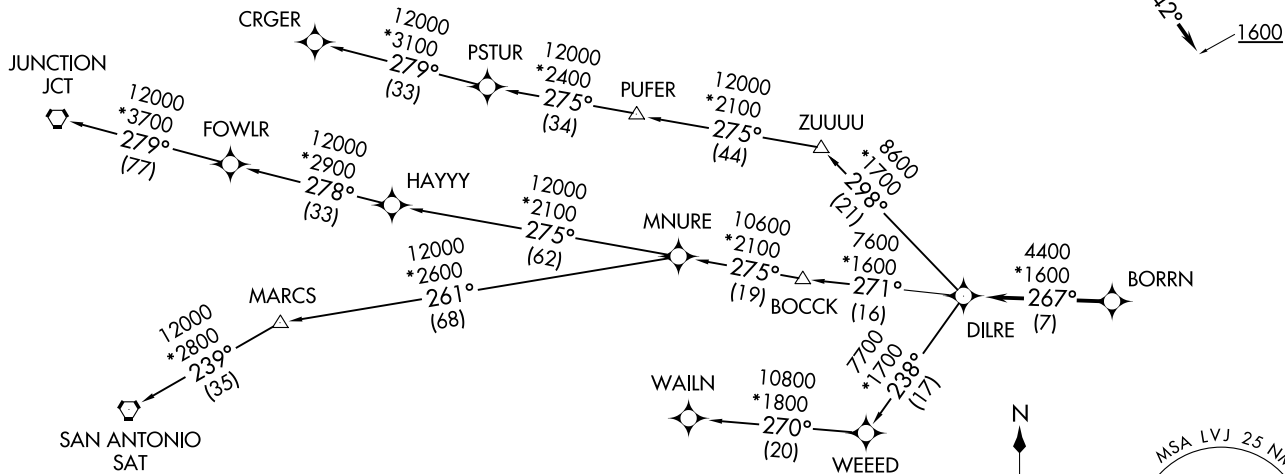
RADAR required.

**TOP ALTITUDE:
ASSIGNED BY ATC**

ASOS
118.525
CTAF
122.725
CLNC DEL
124.0
HOUSTON DEP CON
134.45 284.0

TAKEOFF MINIMUMS

Rwys 14, 32: Standard with minimum
climb of 500'/NM to 560.



NOTE: CRGER-TRANSITION ATC assigned only
for aircraft departing 54T, AXH, EFD, GLS,
HPY, IWS, LBX, LVJ, SGR, TME, TØØ, T41.

(NARRATIVE ON FOLLOWING PAGE)

NOTE: Chart not to scale.

BORRN SIX DEPARTURE (RNAV)
(BORRN6.BORRN) 30NOV23

PEARLAND RGNL (LVJ)
HOUSTON, TEXAS

(BORRN6.BORRN) 23334
BORRN SIX DEPARTURE (RNAV)

PEARLAND RGNL (LVJ)
HOUSTON, TEXAS

AL-6460 (FAA)

BORRN SIX DEPARTURE (RNAV)



DEPARTURE ROUTE DESCRIPTION

TAKEOFF RUNWAY 14: Climb on heading 142° to 1600, for RADAR vectors to BORRN, thence. . . .

TAKEOFF RUNWAY 32: Climb on heading 322° to 900, for RADAR vectors to BORRN, thence. . . .

. . . .on track 267° to DILRE, then on (transition). Maintain ATC assigned altitude. Expect filed altitude 10 minutes after departure.

CRGER TRANSITION (BORRN6.CRGER)

JUNCTION TRANSITION (BORRN6.JCT)

MNURE TRANSITION (BORRN6.MNURE)

SAN ANTONIO TRANSITION (BORRN6.SAT)

WAILN TRANSITION (BORRN6.WAILN)

SC-5, 23 JAN 2025 to 20 FEB 2025

SC-5, 23 JAN 2025 to 20 FEB 2025