

RNAV-1 DME/DME/IRU or GPS.

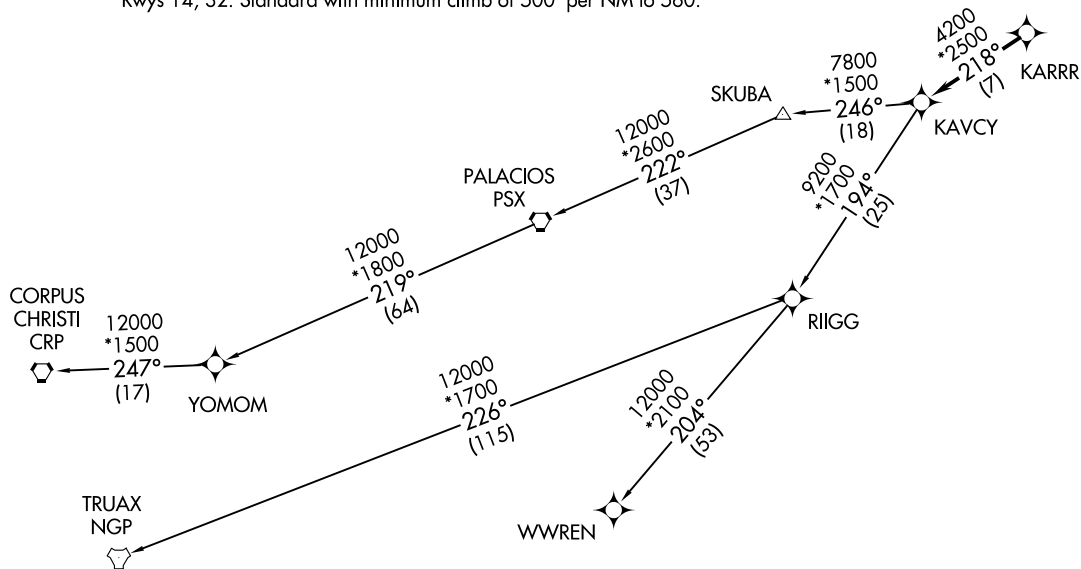
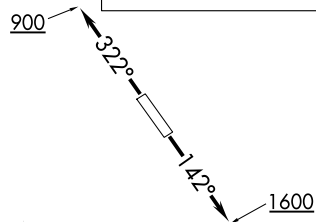
RADAR required.

TOP ALTITUDE:
ASSIGNED BY ATC

ASOS
118.525
CTAF
122.725
CLNC DEL
124.0
HOUSTON DEP CON
134.45 284.0

TAKEOFF MINIMUMS

Rwys 14, 32: Standard with minimum climb of 500' per NM to 560.



(NARRATIVE ON FOLLOWING PAGE)

NOTE: Chart not to scale.

KARRR SEVEN DEPARTURE (RNAV)
(KARRR7 .KARRR) 29DEC22

HOUSTON, TEXAS
PEARLAND RGNL (L V T)

(KARRR7 .KARRR) 22363
KARRR SEVEN DEPARTURE (RNAV)

PEARLAND RGNL (L V T)
HOUSTON, TEXAS

AL-6460 (FAA)

KARRR SEVEN DEPARTURE (RNAV)



DEPARTURE ROUTE DESCRIPTION

TAKEOFF RUNWAY 14: Climb on heading 142° to 1 600, for RADAR vectors to KARRR, thence. . . .

TAKEOFF RUNWAY 32: Climb on heading 322° to 900, for RADAR vectors to KARRR, thence. . . .

. . . .on track 218° to KAVCY, then on (transition). Maintain ATC assigned altitude. Expect filed altitude 10 minutes after departure.

CORPUS CHRISTI TRANSITION (KARRR7.CRP)

PALACIOS TRANSITION (KARRR7.PSX)

TRUJAX TRANSITION (KARRR7.NGP)

WWREN TRANSITION (KARRR7.WWREN)

YOMOM TRANSITION (KARRR7.YOMOM)

SC-5, 23 JAN 2025 to 20 FEB 2025

SC-5, 23 JAN 2025 to 20 FEB 2025