

MMALT SEVEN DEPARTURE (RNAV)

SC-5, 23 JAN 2025 to 20 FEB 2025

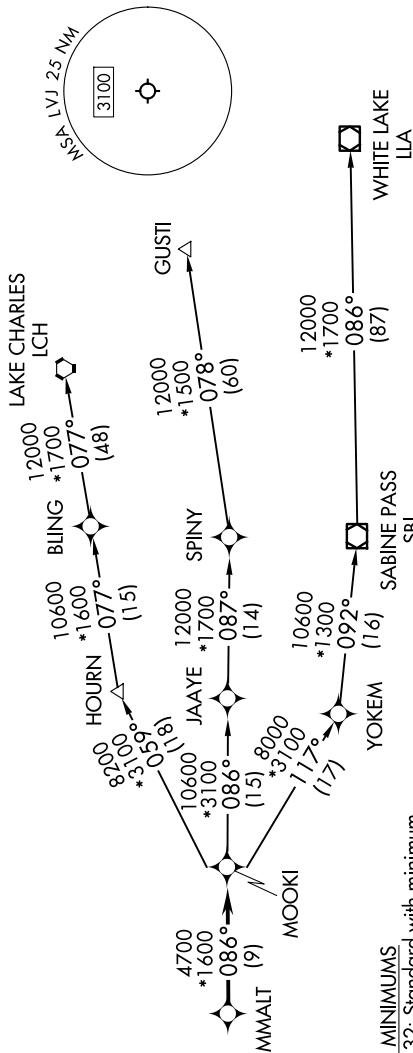
RNAV 1 - DME/DME/IRU or GPS.

RADAR required.

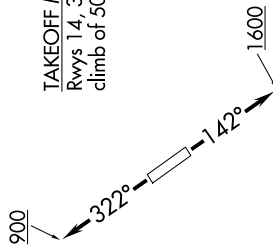
HOUSTON DEP CON
 134.45 284.0
 ASOS
 118.525
 CLNC DEL
 124.0
 CTAF
 122.725

MMALT SEVEN DEPARTURE (RNAV)

(MMALT7.MMALT) 30NOV23



TAKEOFF MINIMUMS
 Rwy 14, 32: Standard with minimum climb of 500'/NM to 560.



NOTE: GUSTI and LCH Transitions ATC assigned only for aircraft departing AXH, EFD, GLS, HPY, IWS, LBX, LVJ, SGR, TME, T00, T41 and 54T.

**TOP ALTITUDE:
ASSIGNED BY ATC**

DEPARTURE ROUTE DESCRIPTION

TAKEOFF RUNWAY 14: Climb on heading 142° to 1600, for RADAR vectors to MMALT, thence. . . .
TAKEOFF RUNWAY 32: Climb on heading 322° to 900, for RADAR vectors to MMALT, thence. . . .

. . . on track 086° to MOOKI, then on (transition). Maintain ATC assigned altitude.
 Expect filed altitude 10 minutes after departure.

GUSTI TRANSITION (MMALT7.GUSTI)
LAKE CHARLES TRANSITION (MMALT7.LCH)
WHITE LAKE TRANSITION (MMALT7.LLA)

NOTE: Chart not to scale.

SC-5, 23 JAN 2025 to 20 FEB 2025