

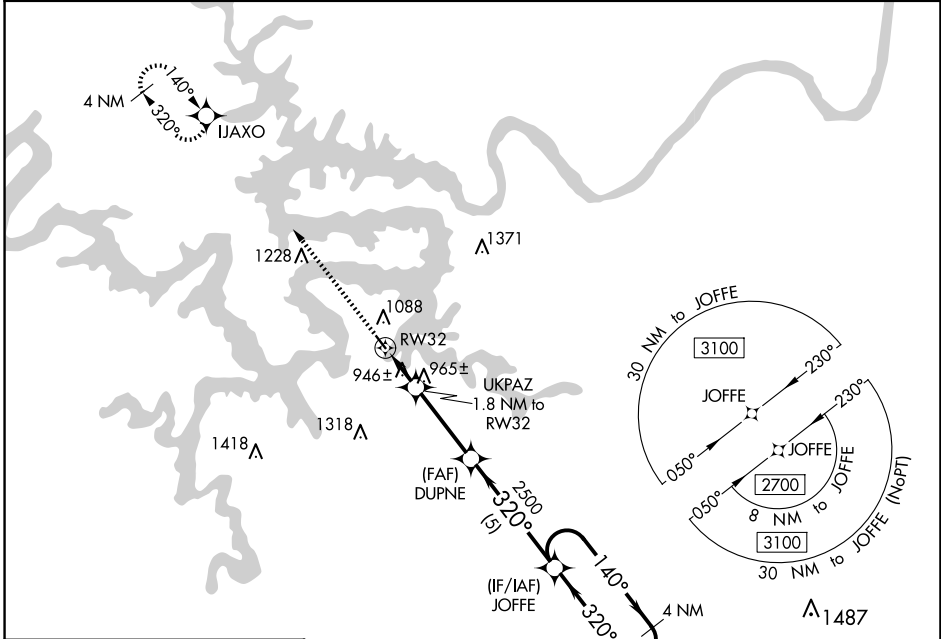
WAAS CH <b>86832</b> <b>W32A</b>	APP CRS <b>320°</b>	Rwy Idg <b>3205</b> TDZE <b>875</b> Apt Elev <b>876</b>
--	------------------------	---

# RNAV (GPS) RWY 32

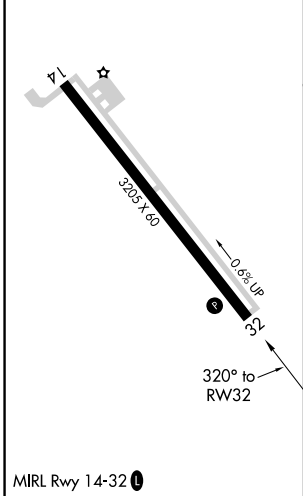
GRAND GLAIZE-OSAGE BEACH (K15)

<p><b>NA</b> DME/DME RNP-0.3 NA. Use Kaiser Lake Ozark altimeter setting; when not received, use Camden ton altimeter setting and increase all MDA 40 feet. Procedure NA at night. Helicopter visibility reduction below 1 SM NA.</p>	<p>MISSED APPROACH: Climb to 2700 direct IJAXO and hold.</p>
---	--

<p>MIZZU APP CON <b>124.1 353.925</b></p>	<p>UNICOM <b>122.8 (CTAF) 1</b></p>
---	---



ELEV 876	TDZE 875
----------	----------



<p>2700 IJAXO Visual Segment - Obstacles.</p>	<p>JOFFE 4 NM Holding Pattern</p>																				
<p>UKPAZ 1.8 NM to RW32</p>	<p>DUPNE</p>																				
<p>RW32</p>	<p>JOFFE</p>																				
<p>1460</p>	<p>2500</p>																				
<p>1.8 NM</p>	<p>3.2 NM</p>																				
<p>5 NM</p>	<p>2700</p>																				
<table border="1"> <thead> <tr> <th>CATEGORY</th> <th>A</th> <th>B</th> <th>C</th> <th>D</th> </tr> </thead> <tbody> <tr> <td>LP MDA</td> <td>1220-1</td> <td>345 (400-1)</td> <td></td> <td>NA</td> </tr> <tr> <td>LNAV MDA</td> <td>1240-1</td> <td>365 (400-1)</td> <td></td> <td>NA</td> </tr> <tr> <td>CIRCLING</td> <td>1420-1</td> <td>544 (600-1)</td> <td></td> <td>NA</td> </tr> </tbody> </table>	CATEGORY	A	B	C	D	LP MDA	1220-1	345 (400-1)		NA	LNAV MDA	1240-1	365 (400-1)		NA	CIRCLING	1420-1	544 (600-1)		NA	
CATEGORY	A	B	C	D																	
LP MDA	1220-1	345 (400-1)		NA																	
LNAV MDA	1240-1	365 (400-1)		NA																	
CIRCLING	1420-1	544 (600-1)		NA																	