

VOR/DME SHY 108.4 Chan 21	APP CRS 318°	Rwy Idg TDZE Apt Elev	3205 875 876
--	------------------------	-----------------------------	---

VOR RWY 32

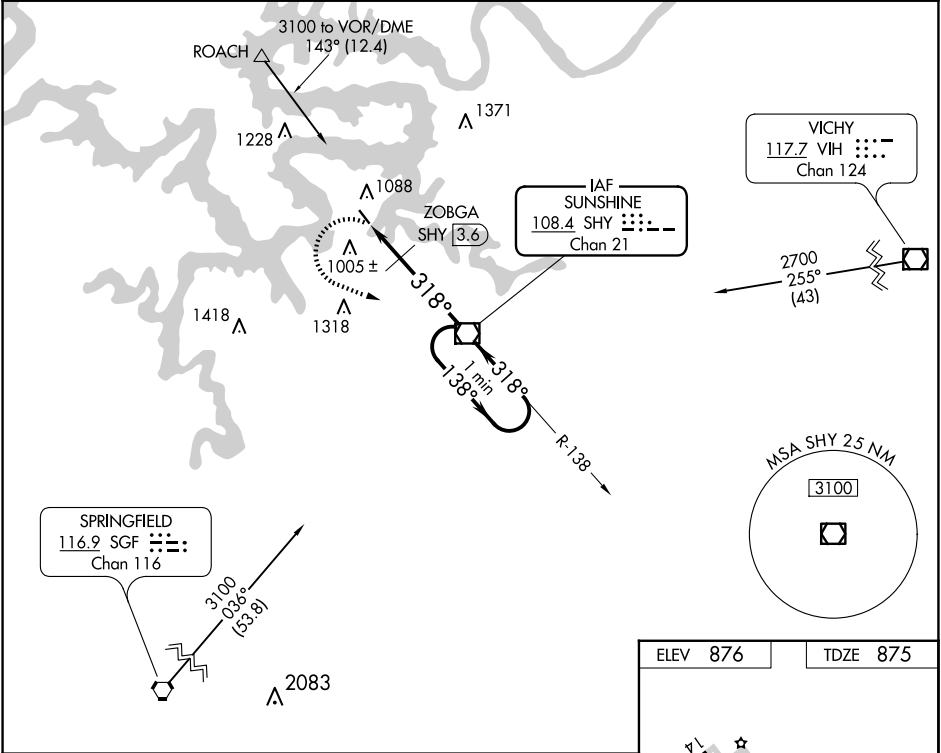
GRAND GLAIZE-OSAGE BEACH (K15)

▼ Helicopter visibility reduction below 1 SM NA. Procedure NA at night.
▲ NA Use Kaiser Lake Ozark altimeter setting; when not received, use Camdenton altimeter setting and increase all MDA 40 feet.

MISSED APPROACH: Climbing left turn to 2700 direct SHY VOR/DME and hold.

MIZZU APP CON
124.1 353.925

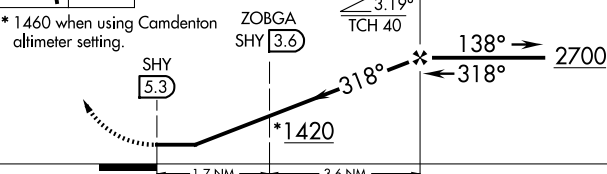
UNICOM
122.8 (CTAF) 0



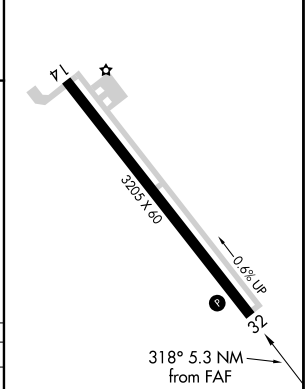
NC-3, 23 JAN 2025 to 20 FEB 2025

NC-3, 23 JAN 2025 to 20 FEB 2025

2700 SHY VGS1 and descent angles not coincident (VGS1 Angle 3.50/TCH 46).
 SHY VOR/DME One Minute Holding Pattern



ELEV 876	TDZE 875
----------	----------



CATEGORY	A	B	C	D
S-32	1420-1	545 (600-1)		NA
CIRCLING	1420-1	544 (600-1)		NA
ZOBGA FIX MINIMUMS (DME REQUIRED)				
S-32	1280-1	405 (500-1)		NA
CIRCLING	1420-1	544 (600-1)		NA

FAF to MAP 5.3 NM					
Knots	60	90	120	150	180
Min:Sec	5:18	3:32	2:39	2:07	1:46