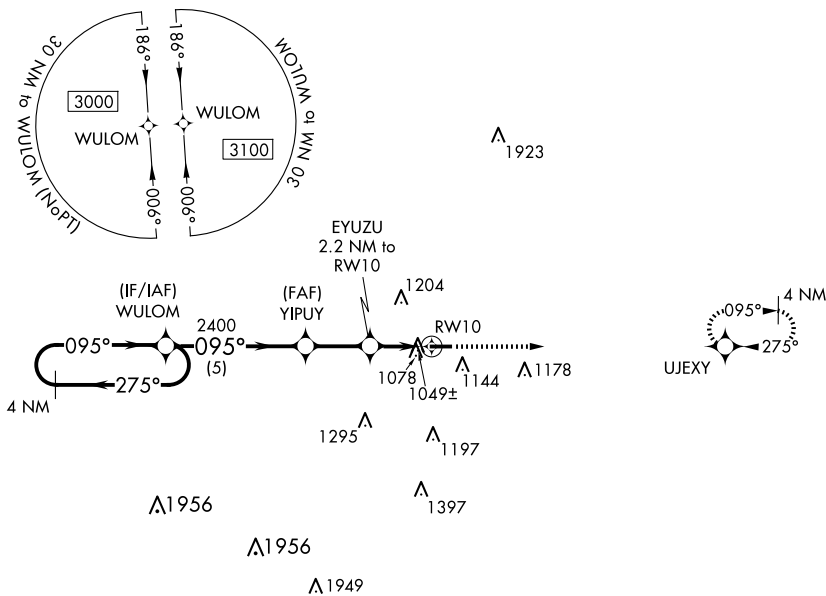


WAAS CH 61134 W10A	APP CRS 095°	Rwy Idg TDZE Apt Elev	4002 920 920
--	------------------------	-----------------------------	---

RNAV (GPS) RWY 10

MASON JEWETT FLD (TEW)

RNP APCH.		MISSED APPROACH: Climb to 3000 direct UJEXY and hold.
▼ Rwy 10 helicopter visibility reduction below 1 SM NA. Straight-in Rwy 10 ▲ NA at night, Circling Rwy 10 NA at night.		
AWOS-3P 119.425	GREAT LAKES APP CON ★ 118.65 226.4	UNICOM 122.7 (CTAF) 0



ELEV 920	TDZE 920
----------	----------

4 NM Holding Pattern	Visual Segment - Obstacles.	3000	UJEXY
3000 ← 275° 095° →	WULOM YIPUY EYUZU 2.2 NM to RWY 10	↑ 3000	✧ UJEXY
2400 * 1660	RWY 10	4002 X 75 28	01 28
5 NM 2.3 NM 2.2 NM	095° to RWY 10	MIRL Rwy 10-28 0 REIL Rwy 10 and 28 0	

EC-1, 23 JAN 2025 to 20 FEB 2025

EC-1, 23 JAN 2025 to 20 FEB 2025