

VORTAC TNP <b>114.2</b> Chan <b>89</b>	APP CRS <b>264°</b>	Rwy Idg <b>5531</b> TDZE <b>1835</b> Apt Elev <b>1888</b>
--	------------------------	---

# VOR RWY 26

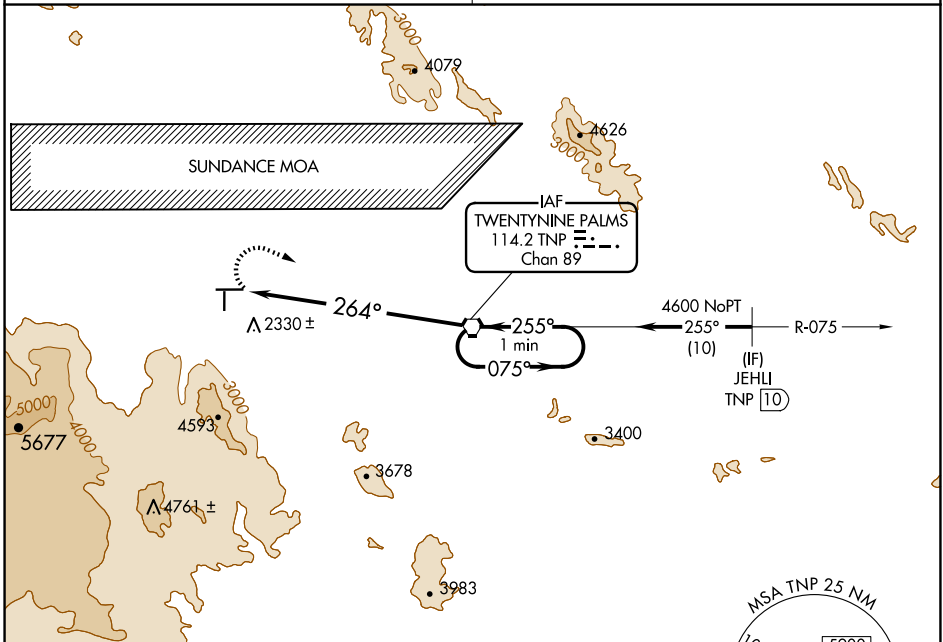
TWENTYNINE PALMS (TNP)

**NA** When Palm Springs Intl altimeter setting not received, procedure NA. Circling NA south of Rwy 8-26. Use Palm Springs Intl altimeter setting. Circling Rwy 8 NA at night.

**MISSED APPROACH:** Climbing right turn to 5900 direct TNP VORTAC and hold, continue climb-in-hold to 5900.

LOS ANGELES CENTER  
**128.15 285.6**

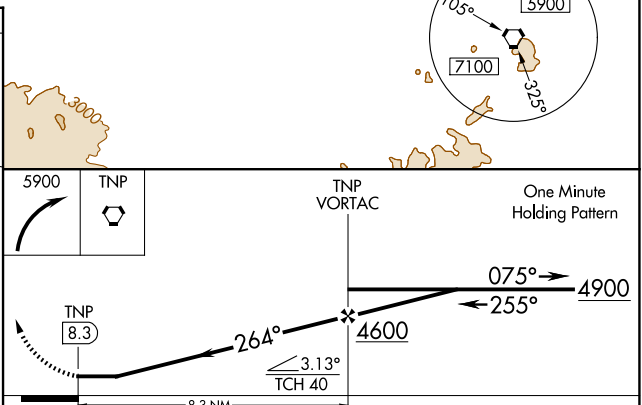
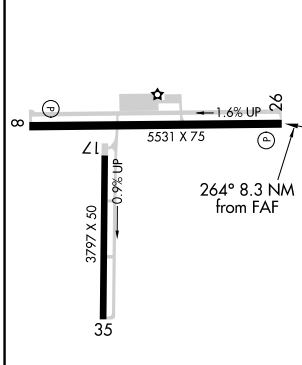
AUNICOM  
**122.8 (CTAF) 0**



SW-3, 23 JAN 2025 to 20 FEB 2025

SW-3, 23 JAN 2025 to 20 FEB 2025

ELEV 1888	TDZE 1835
-----------	-----------



REL Rws 8 and 26 0  
MIRL Rws 8-26 and 17-35 0  
FAF to MAP 8.3 NM

Knots	60	90	120	150	180
Min:Sec	8:18	5:32	4:09	3:19	2:46

CATEGORY	A	B	C	D
S-26	3580-1¼ 1745 (1700-1¼)	3580-1½ 1745 (1700-1½)	NA	
<b>C</b> CIRCLING	3580-1¼ 1692 (1700-1¼)	3580-1½ 1692 (1700-1½)	NA	