

| | | |
|-------------|----------|-------------|
| APP CRS | Rwy Idg | 5099 |
| 024° | TDZE | 1265 |
| | Apt Elev | 1265 |

RNAV (GPS) RWY 2

WILBARGER COUNTY (F05)

RNP APCH.

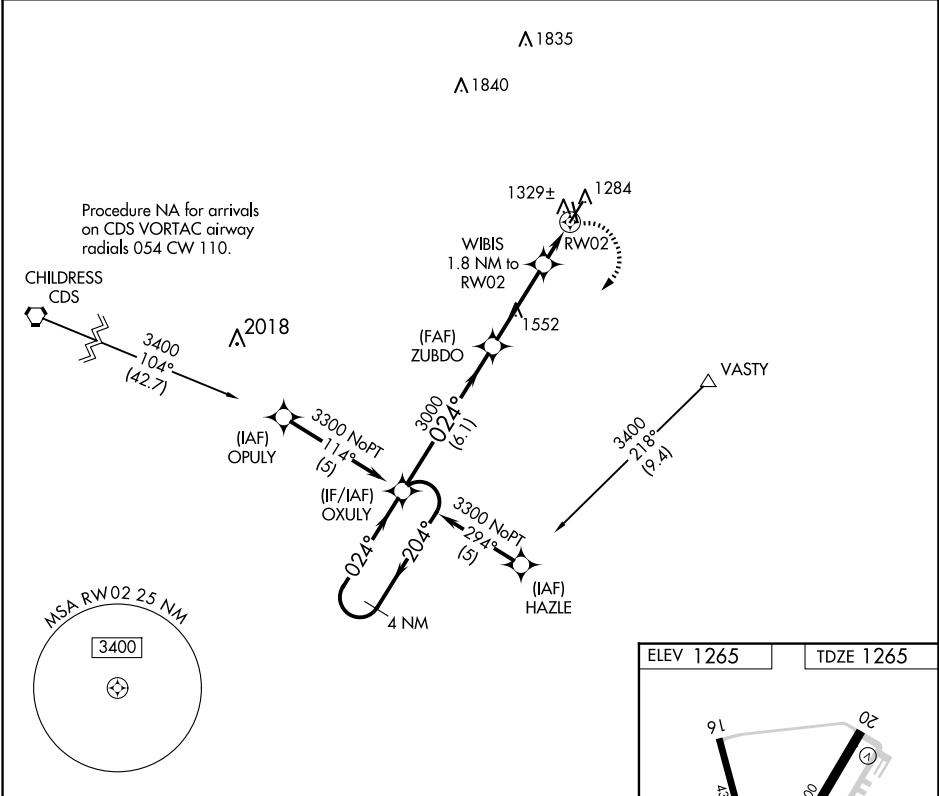
▼ When local altimeter setting not received, use Frederick altimeter setting:
▲ increase all MDA 40 feet. VDP NA when using Frederick altimeter setting.

MISSED APPROACH: Climbing right turn to 3300 direct OXULY and hold.

AWOS-3
118.525

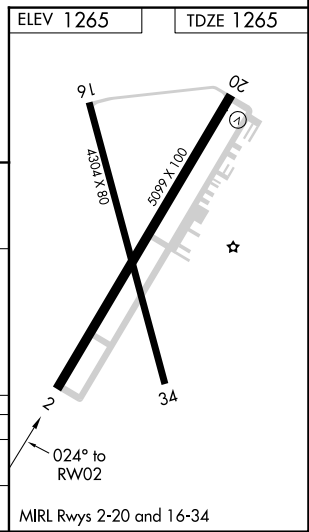
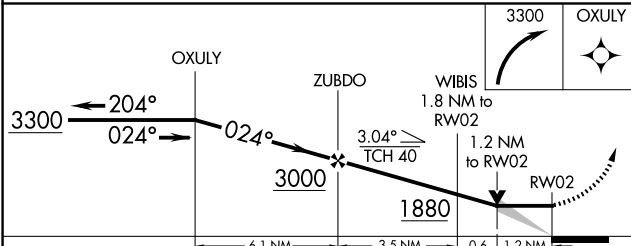
ALTUS APP CON*
125.1 353.7

UNICOM
122.8 (CTAF) 0



SC-2, 23 JAN 2025 to 20 FEB 2025

SC-2, 23 JAN 2025 to 20 FEB 2025



| CATEGORY | A | B | C | D |
|----------|-----------------------|-----------------------|-------------------------|----|
| LNVA MDA | 1680-1 | 415 (500-1) | 1680-1¼ 415 (500-1¼) | NA |
| CIRCLING | 1680-1 415 (500-1) | 1720-1 455 (500-1) | 1800-1½ 535 (600-1½) | NA |