

WAAS CH 63018 W20A	APP CRS 204°	Rwy Idg TDZE Apt Elev	5099 1259 1265
--	------------------------	-----------------------------	---

RNAV (GPS) RWY 20

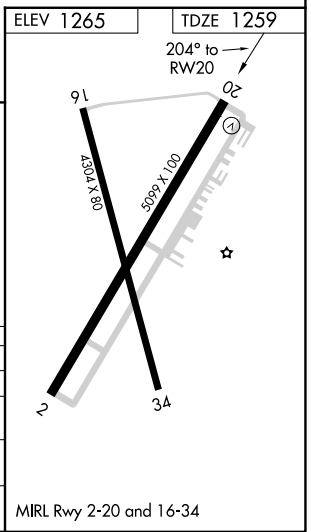
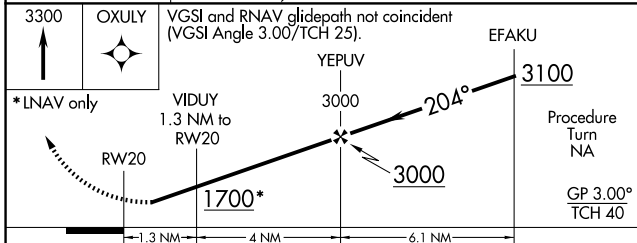
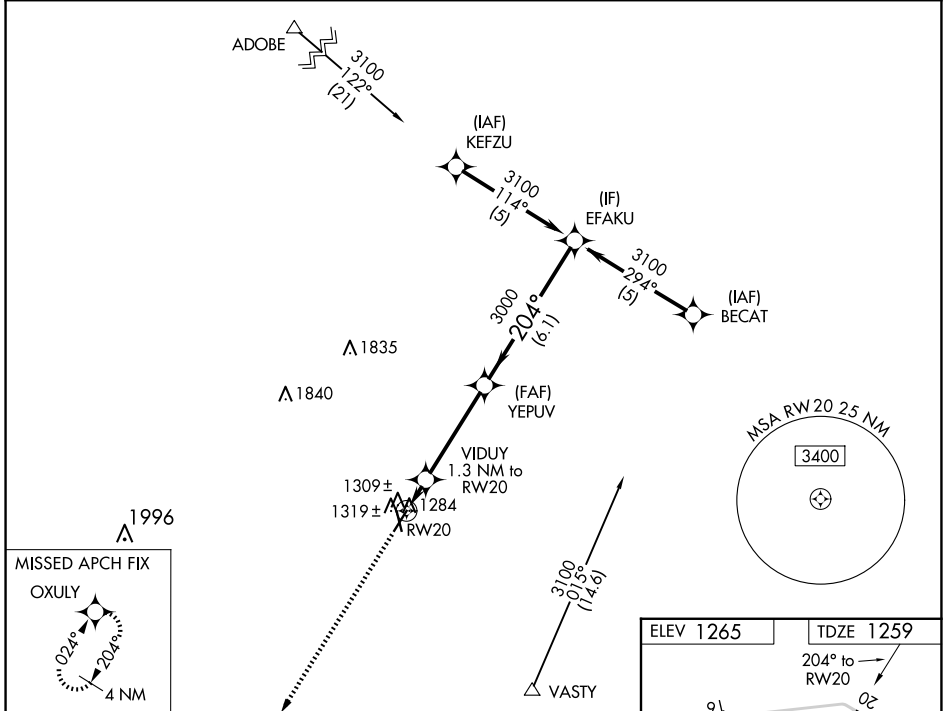
WILBARGER COUNTY (F05)

RNP APCH

⚠ Baro-VNAV NA when using Frederick altimeter setting. For uncompensated Baro-VNAV systems, LNAV/VNAV NA below -17°C or above 54°C. Rwy 20 helicopter visibility reduction below 3/4 SM NA. When local altimeter setting not received, use Frederick altimeter setting: increase all DA/MDA 40 feet.

MISSED APPROACH:
Climb to 3300 direct OXULY and hold.

AWOS-3 118.525	ALTUS APP CON* 125.1 353.7	UNICOM 122.8 (CTAF)
--------------------------	--------------------------------------	-------------------------------



CATEGORY	A	B	C	D
LPV DA	1509-1	250 (300-1)		NA
LNAV/VNAV DA	1585-1 1/4	326 (400-1 1/4)		NA
LNAV MDA	1580-1	321 (400-1)		NA
CIRCLING	1660-1 395 (400-1)	1720-1 455 (500-1)	1800-1 1/2 535 (600-1 1/2)	NA

SC-2, 23 JAN 2025 to 20 FEB 2025

SC-2, 23 JAN 2025 to 20 FEB 2025