

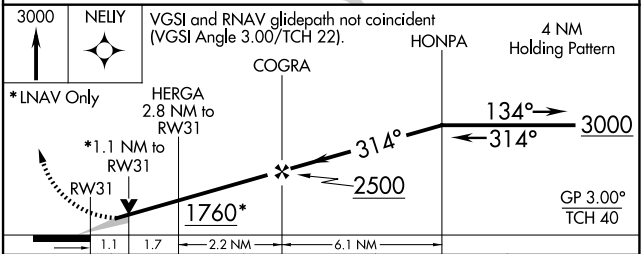
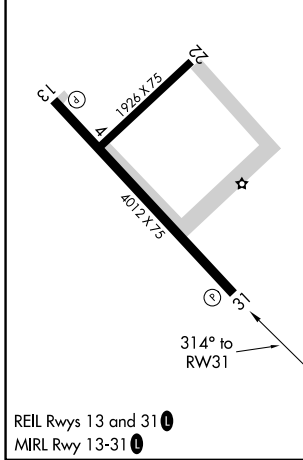
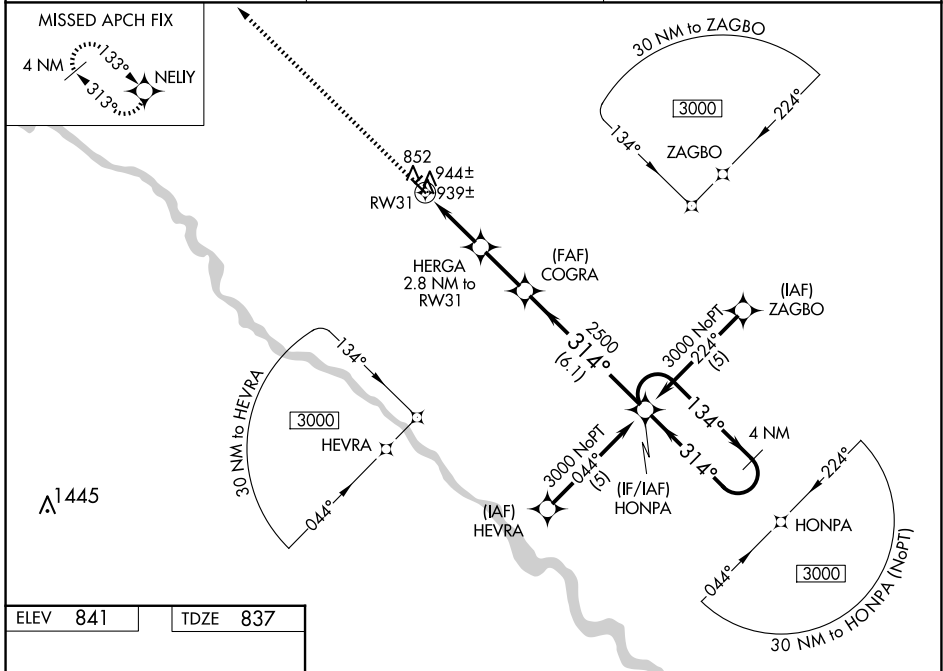
| | | | |
|--|------------------------|---|-------------|
| WAAS CH 82515 W31A | APP CRS 314° | Rwy Idg TDZE 837 Apt Elev 841 | 4012 |
|--|------------------------|---|-------------|

RNAV (GPS) RWY 31

OSKALOOSA MUNI (00A)

| | |
|---|--|
| RNP APCH. | MISSED APPROACH: Climb to 3000 direct NELY and hold. |
| <p>▼ When local altimeter setting not received, use Ottumwa altimeter setting and increase all DA 18 feet and all MDA 20 feet and increase LNAV/VNAV all Cats visibility ¼ mile. Baro-VNAV and VDP NA when using Ottumwa altimeter setting. For uncompensated Baro-VNAV systems, LNAV/VNAV NA below -1.6°C (4°F) or above 54°C (130°F).</p> | |

| | | |
|--------------------------|---|---------------------------------|
| AWOS-3 118.625 | CHICAGO CENTER 118.15 335.575 | UNICOM 122.8 (CTAF) 0 |
|--------------------------|---|---------------------------------|



| CATEGORY | A | B | C | D |
|---------------|-----------------------|-----------------------|-------------------------|----|
| LPV DA | 1187-1¼ | 350 (400-1¼) | | NA |
| LNAV/ VNAV DA | 1209-1¼ | 372 (400-1¼) | | NA |
| LNAV MDA | 1200-1 | 363 (400-1) | | NA |
| CIRCLING | 1260-1 419 (500-1) | 1300-1 459 (500-1) | 1300-1½ 459 (500-1½) | NA |

NC-3, 23 JAN 2025 to 20 FEB 2025

NC-3, 23 JAN 2025 to 20 FEB 2025