

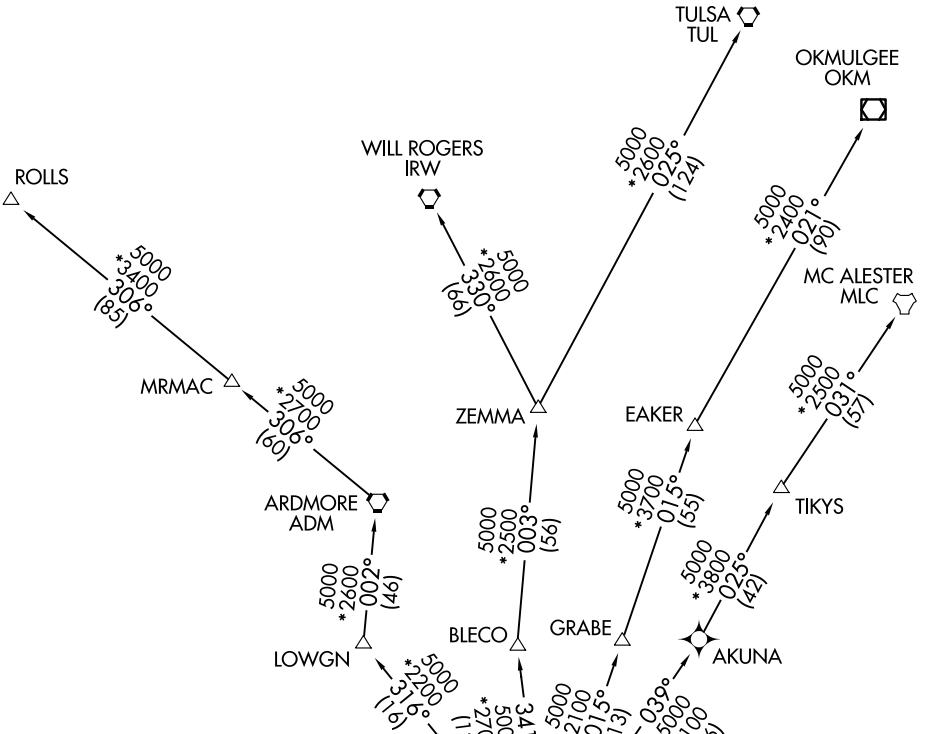
NANDR TWO DEPARTURE (RNAV)

LONE STAR DEP CON
135.975 379.9

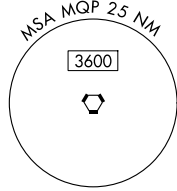
RNAV 1 - DME/DME/IRU or GPS.

RADAR required.

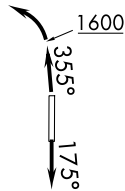
**TOP ALTITUDE:
ASSIGNED BY ATC**



- NOTE: EAKER Transition: For TUL terminal arrivals only.
- NOTE: TULSA Transition: For all aircraft overflying TUL VORTAC.
- NOTE: Aircraft arriving to the Oklahoma City terminal area, file and expect the ZEMMA enroute transition.



TAKEOFF MINIMUMS
Rwys 17, 35: Standard.



(CONTINUED ON FOLLOWING PAGE)

NOTE: Chart not to scale.

SC-2, 23 JAN 2025 to 20 FEB 2025

SC-2, 23 JAN 2025 to 20 FEB 2025

NANDR TWO DEPARTURE (RNAV)



DEPARTURE ROUTE DESCRIPTION

TAKEOFF RUNWAY 17: Climb on heading 175° or as assigned by ATC, thence...

TAKEOFF RUNWAY 35: Climb on heading 355° to 1600 before turning left, thence...

. . . . expect RADAR vectors to cross CUZNO at or above 3000, then on track 357° to cross NANDR at or below 13000, then on assigned transition.

EAKER TRANSITION (NANDR2.EAKER)

MC ALESTER TRANSITION (NANDR2.MLC)

OKMULGEE TRANSITION (NANDR2.OKM)

ROLLS TRANSITION (NANDR2.ROLLS)

TULSA TRANSITION (NANDR2.TUL)

WILL ROGERS TRANSITION (NANDR2.IRW)

ZEMMA TRANSITION (NANDR2.ZEMMA)

SC-2, 23 JAN 2025 to 20 FEB 2025

SC-2, 23 JAN 2025 to 20 FEB 2025