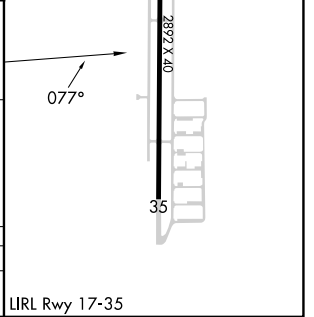
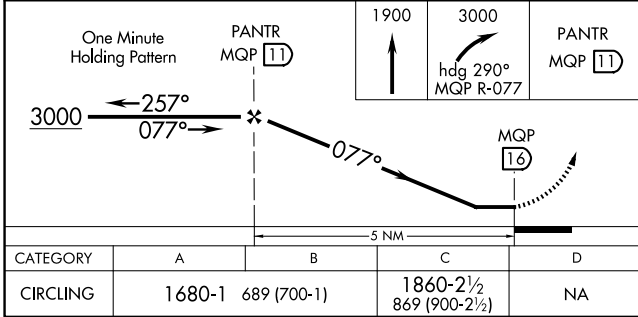
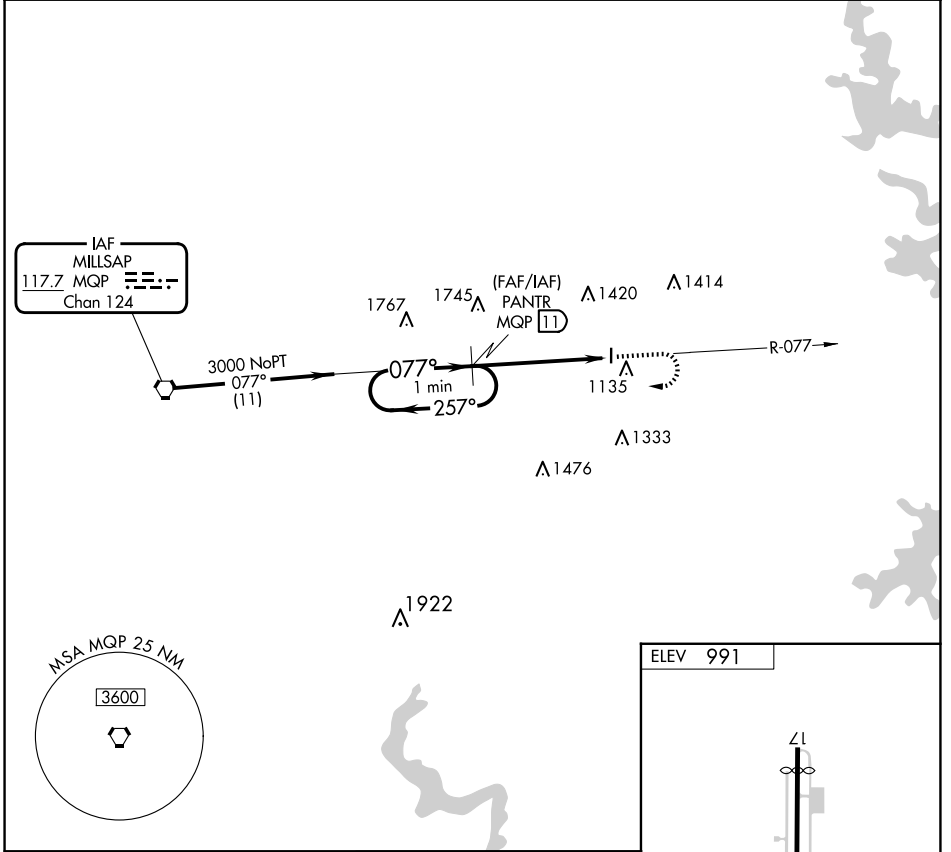


VORTAC MQP 117.7 Chan 124	APP CRS 077°	Rwy Idg TDZE Apt Elev	N/A N/A 991
---	------------------------	-----------------------------	--

VOR/DME-A
PARKER COUNTY (WEA)

<p>NA Use Fort Worth Meacham altimeter setting.</p>	<p>MISSED APPROACH: Climb to 1900 then climbing right turn to 3000 via heading 290° and MQP R-077 to PANTR and hold.</p>
<p>LONE STAR APP CON 135.975 379.9</p>	<p>UNICOM 122.7 (CTAF)</p>



CATEGORY	A	B	C	D
CIRCLING	1680-1	689 (700-1)	1860-2½ 869 (900-2½)	NA

SC-2, 23 JAN 2025 to 20 FEB 2025

SC-2, 23 JAN 2025 to 20 FEB 2025