

APP CRS <b>348°</b>	Rwy Idg <b>4000</b>
	TDZE <b>473</b>
	Apt Elev <b>484</b>

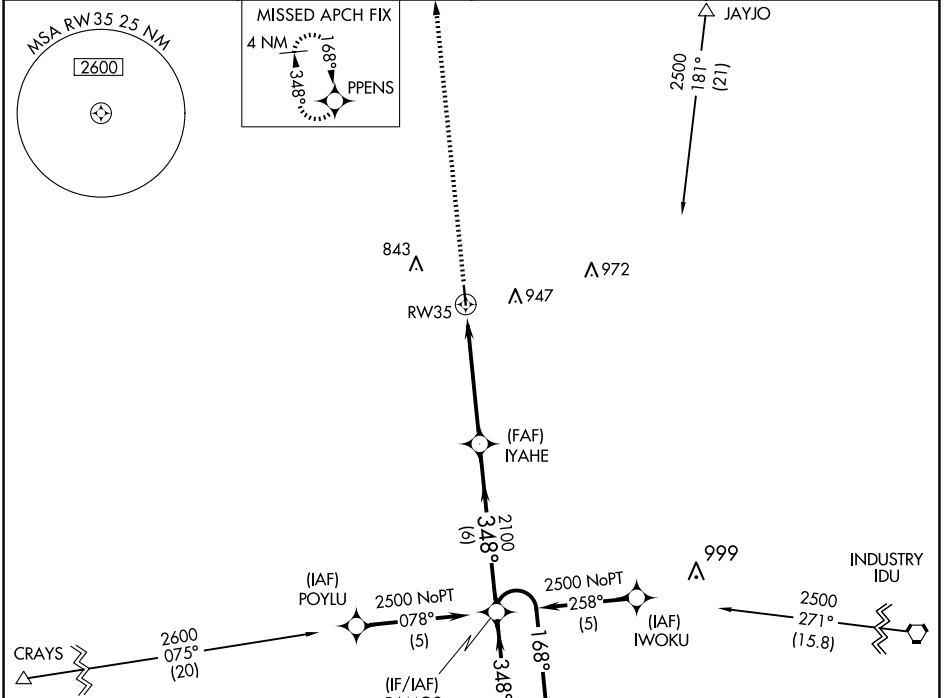
# RNAV (GPS) RWY 35

GIDDINGS-LEE COUNTY (GYB)

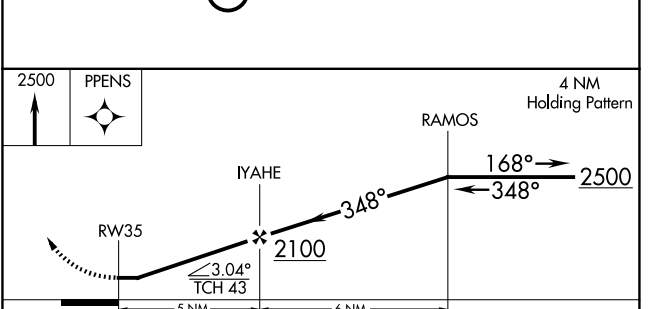
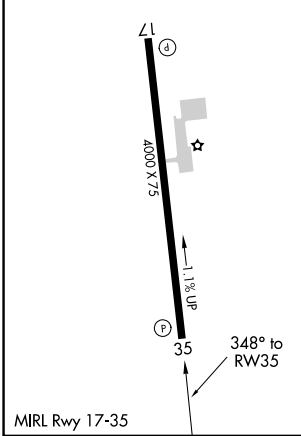
**⚠** DME/DME RNP-0.3 NA. Procedure NA at night. Helicopter visibility reduction below 1 SM NA. When local altimeter setting not received, use Austin-Bergstrom Intl altimeter setting and increase all MDA 100 feet; increase visibility Cat C ¼ SM.

**⚠** MISSED APPROACH: Climb to 2500 direct PPENS and hold.

AWOS-3 <b>119.225</b>	AUSTIN APP CON <b>127.225 317.65</b>	UNICOM <b>123.05 (CTAF)</b>
--------------------------	---	--------------------------------



ELEV <b>484</b>	TDZE <b>473</b>
-----------------	-----------------



CATEGORY	A	B	C	D
LNAV MDA	960-1	487 (500-1)	960-1¼ 487 (500-1¼)	NA
CIRCLING	960-1 476 (500-1)	1160-1 676 (700-1)	1240-2¼ 756 (800-2¼)	NA

SC-5, 23 JAN 2025 to 20 FEB 2025

SC-5, 23 JAN 2025 to 20 FEB 2025