

WAAS CH 48819	APP CRS 032°	Rwy Idg TDZE Apt Elev	5500 147 164
W03A			

RNAV (GPS) RWY 3

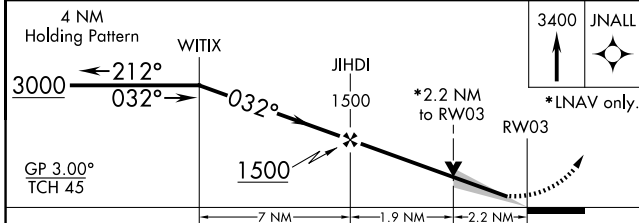
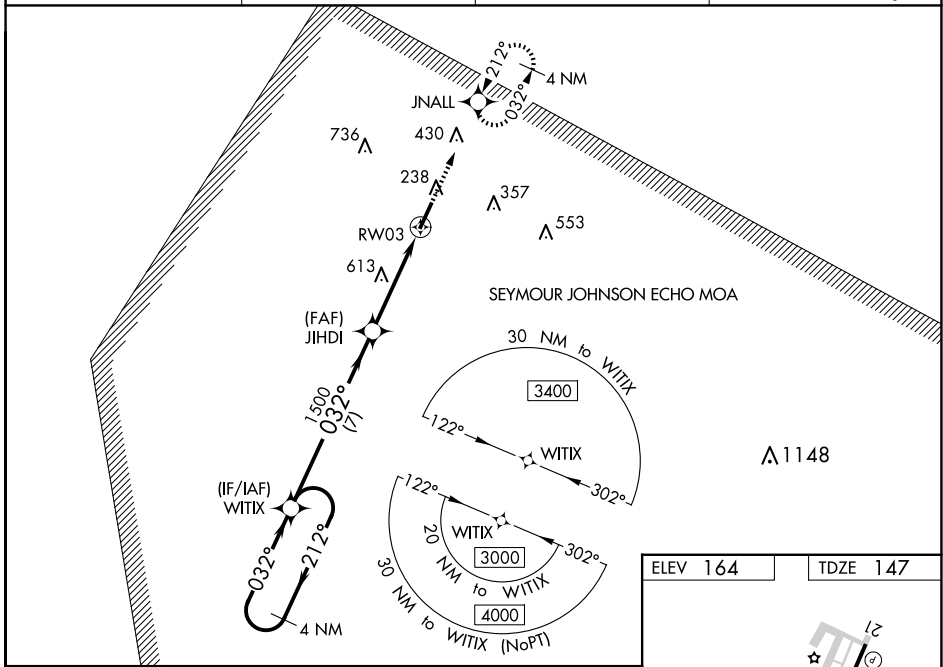
JOHNSTON RGNL (JNX)

⚠ For uncompensated Baro-VNAV systems, LNAV/VNAV NA below -1.5°C (5°F) or above 54°C (130°F). DME/DME RNP-0.3 NA. When local altimeter setting not received, use Erwin altimeter setting and increase LPV DA to 447 feet, LNAV/VNAV DA to 1020 feet, and all LNAV/VNAV visibilities ½ mile. Increase all MDA 60 feet; increase visibility Cat B, C, and D ¼ mile. Baro-VNAV and VDP NA with Erwin altimeter setting. Inop table does not apply to LNAV/VNAV when using Erwin altimeter setting. For inop MALSR when using Erwin altimeter setting, increase LPV all Cats visibility to 1 mile and LNAV Cats C/D visibility to 2½ miles.

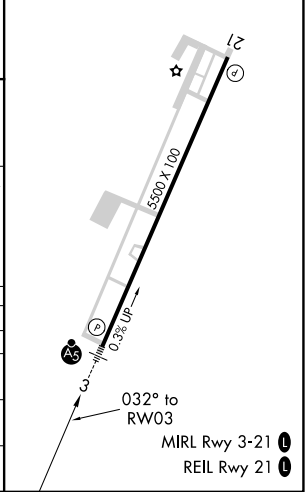
MALSR

MISSED APPROACH:
Climb to 3400 direct JNALL and hold, continue climb-in-hold to 3400.

AWOS-3 120.225	RALEIGH APP CON 125.3 353.675	GCO 135.075	UNICOM 122.725 (CTAF) 0
--------------------------	---	-----------------------	--



ELEV 164	TDZE 147
----------	----------



CATEGORY	A	B	C	D
LPV DA		397-½	250 (300-½)	
LNAV/VNAV DA		970-2½	823 (900-2½)	
LNAV MDA	880-½	733 (800-½)	880-1⅛	733 (800-1⅛)
C CIRCLING	880-1	716 (800-1)	920-2¼ 756 (800-2¼)	1100-3 936 (1000-3)

SE-2, 23 JAN 2025 to 20 FEB 2025

SE-2, 23 JAN 2025 to 20 FEB 2025