

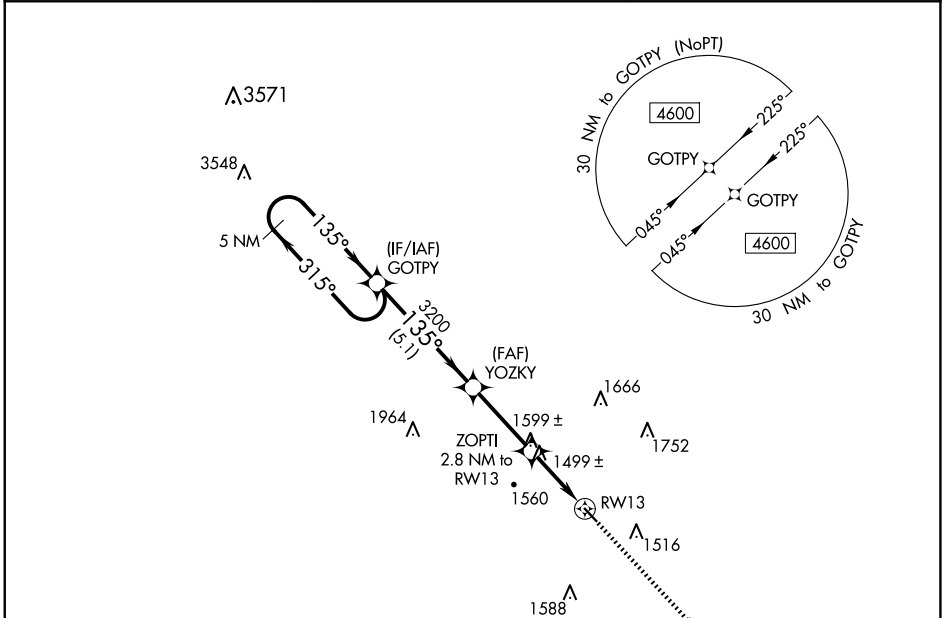
APP CRS	Rwy Idg	3634
135°	TDZE	1277
	Apt Elev	1311

RNAV (GPS) RWY 13

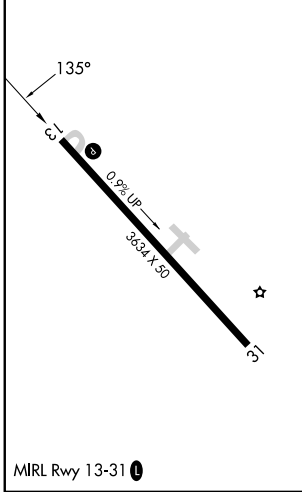
AVA BILL MARTIN MEML (AOV)

RNP APCH.	<p>Procedure NA at night. Use Branson altimeter setting, if not received use Springfield Branson Natl altimeter setting and increase all MDA 20 feet. Rwy 13 helicopter visibility reduction below 1 SM NA.</p>	<p>MISSED APPROACH: Climb to 3500 direct GAHSU and hold.</p>
<p>NA</p>		

BBG AWOS-3 124.625	SPRINGFIELD APP CON 126.35	UNICOM 122.7 (CTAF) 0
------------------------------	--------------------------------------	---------------------------------



ELEV 1311	TDZE 1277
-----------	-----------



5 NM Holding Pattern	GOTPY	YOZKY	ZOPTI 2.8 NM to RW13	RW13
4600	315°	135°	735°	3.00° TCH 40
		3200	2200	
	5.1 NM	3.1 NM	2.8 NM	
CATEGORY	A	B	C	D
LNAV MDA	1840-1	563 (600-1)		NA

NC-3, 23 JAN 2025 to 20 FEB 2025

NC-3, 23 JAN 2025 to 20 FEB 2025