

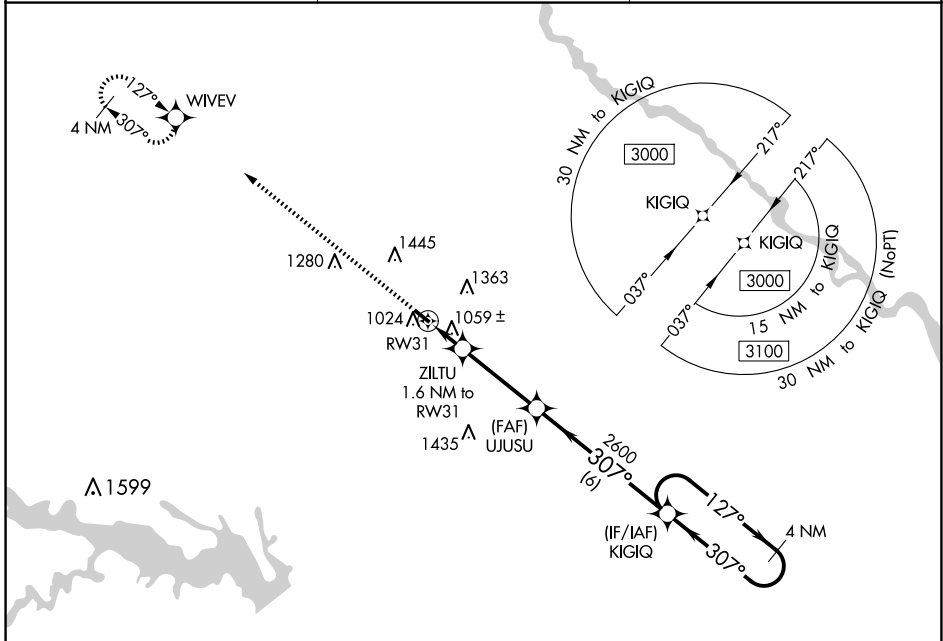
WAAS CH 66033 W31A	APP CRS 307°	Rwy Idg TDZE Apt Elev	3398 964 964
--	------------------------	-----------------------------	---

RNAV (GPS) RWY 31

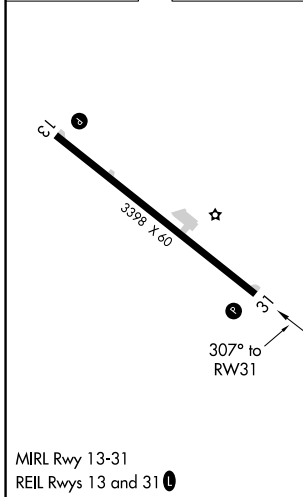
ALBIA MUNI (4C8)

<p>▽ DME/DME RNP-0.3 NA. Use Ottumwa altimeter setting, when not received use Centerville altimeter setting. Helicopter visibility reduction below ¾ SM NA. Baro-VNAV NA.</p> <p>△ NA</p>	<p>MISSED APPROACH: Climb to 3000 direct WIVEV and hold.</p>
---	--

OTM ASOS 124.175	CHICAGO CENTER 118.15 335.575	UNICOM 122.8 (CTAF) 0
----------------------------	---	---------------------------------



ELEV 964	TDZE 964
----------	----------



3000	WIVEV	VGSI and RNAV glidepath not coincident (VGSI Angle 3.00/TCH 30).		4 NM Holding Pattern
* LNAV only	ZILTU 1.6 NM to RW31	UJUSU 2600	KIGIQ	3000
RW31	1500*	2600	127° →	← 307°
	1.6 NM	3.4 NM	6 NM	GP 3.00° TCH 40
CATEGORY	A	B	C	D
LPV DA	1268-1	304 (400-1)		NA
LNAV/VNAV DA	1314-1½	350 (400-1½)		NA
LNAV MDA	1380-1	416 (500-1)		NA
C CIRCLING	1440-1 476 (500-1)	1760-1 796 (800-1)		NA

NC-3, 23 JAN 2025 to 20 FEB 2025

NC-3, 23 JAN 2025 to 20 FEB 2025