

WAVERLY, IOWA

AL-6558 (FAA)

22307

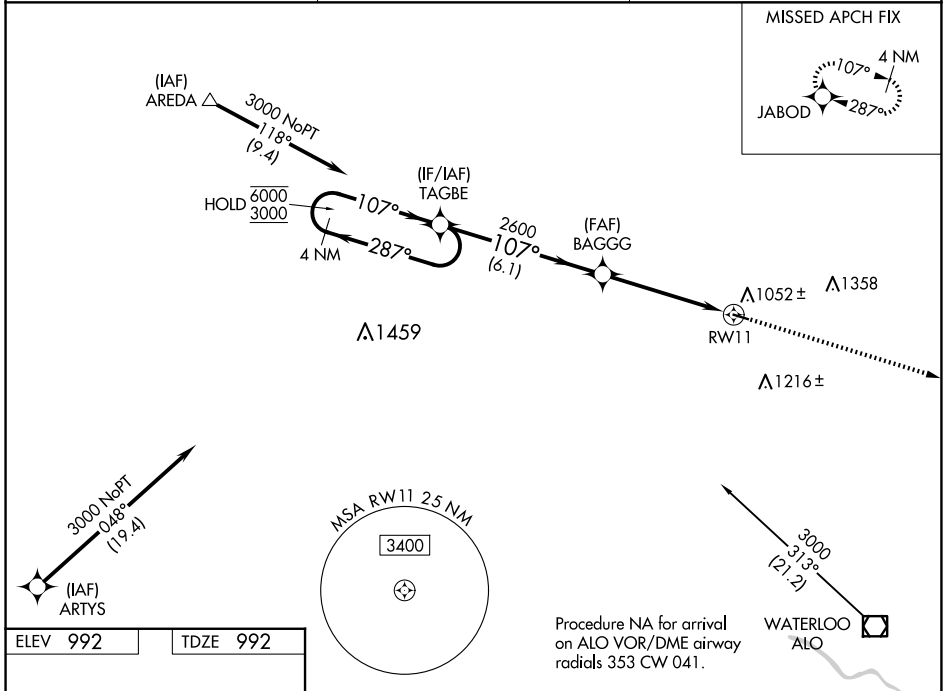
WAAS CH 58243 W11A	APP CRS 107°	Rwy Idg 3200 TDZE 992 Apt Elev 992
--	------------------------	---

RNAV (GPS) RWY 11

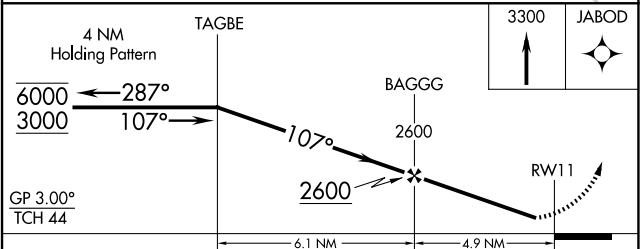
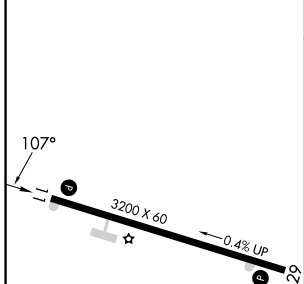
WAVERLY MUNI (C25)

RNP APCH.	MISSED APPROACH: Climb to 3300 direct JABOD and hold.
<p>⚠ Rwy 11 helicopter visibility reduction below 1 SM NA. Baro-VNAV NA.</p> <p>⚠ NA Use Waterloo altimeter setting. Straight-in and Circling Rwy 11 NA at night.</p>	

ALO ASOS 120.65	WATERLOO APP CON* 118.9 251.15	UNICOM 122.8 (CTAF)
---------------------------	--	-------------------------------



ELEV 992	TDZE 992
----------	----------



CATEGORY	A	B	C	D
LPV DA		1287-1 295 (300-1)		NA
LNAV/VNAV DA		1334-1 342 (400-1)		NA
LNAV MDA	1540-1	548 (600-1)	1540-1½ 548 (600-1½)	NA
C CIRCLING	1540-1 548 (600-1)	1620-1 628 (700-1)	1620-1¾ 628 (700-1¾)	NA

REIL Rwy 11 and 29 **Ⓛ**
MIRL Rwy 11-29 **Ⓛ**

WAVERLY, IOWA
Orig 31DEC20

42°45'N-92°30'W

WAVERLY MUNI (C25) RNAV (GPS) RWY 11

NC-3, 23 JAN 2025 to 20 FEB 2025

NC-3, 23 JAN 2025 to 20 FEB 2025