

WAVERLY, IOWA

AL-6558 (FAA)

22223

WAAS CH 78343 W29A	APP CRS 287°	Rwy Idg TDZE Apt Elev	3200 992 992
--	------------------------	-----------------------------	---

RNAV (GPS) RWY 29

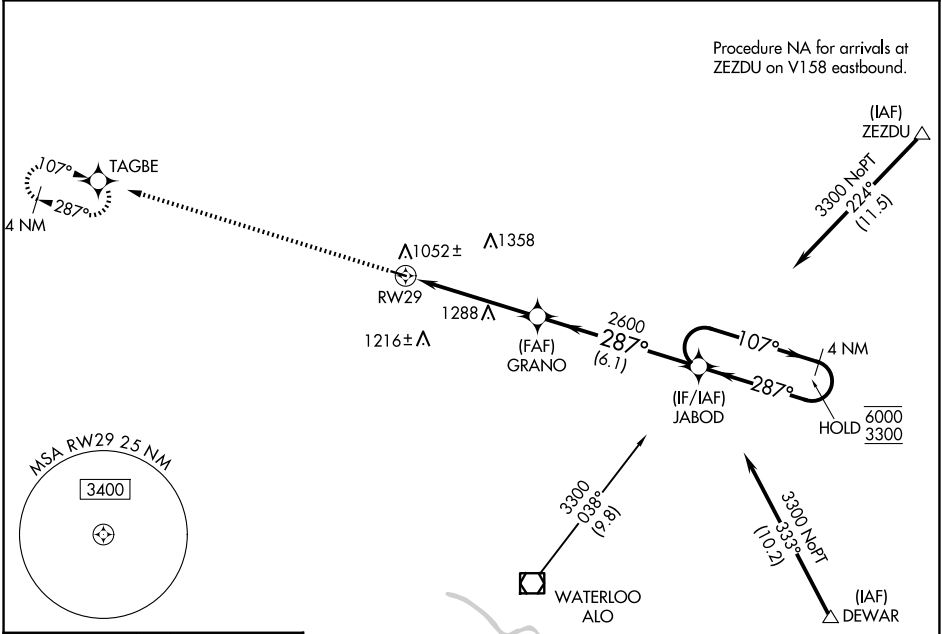
WAVERLY MUNI (C25)

RNP APCH - GPS.

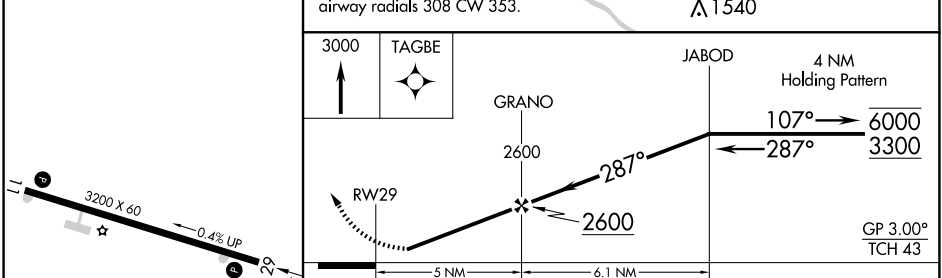
NA Circling to Rwy 11 NA at night. Rwy 29 helicopter visibility reduction below 3/4 SM NA. Baro-VNAV NA. Use Waterloo altimeter setting.

MISSED APPROACH: Climb to 3000 direct TAGBE and hold.

ALO ASOS 120.65	WATERLOO APP CON* 118.9 251.15	UNICOM 122.8 (CTAF) 0
---------------------------	--	---------------------------------



ELEV 992	TDZE 992
----------	----------



CATEGORY	A	B	C	D
LPV DA		1287-1	295 (300-1)	NA
LNAV/VNAV DA		1334-1	342 (400-1)	NA
LNAV MDA	1600-1	608 (700-1)	1600-1 3/4 608 (700-1 3/4)	NA
CIRCLING	1600-1 608 (700-1)	1620-1 628 (700-1)	1620-1 3/4 628 (700-1 3/4)	NA

REIL Rws 11 and 29 0

MIRL Rwy 11-29 0

WAVERLY, IOWA
Orig-A 11AUG22

42°45'N-92°30'W

WAVERLY MUNI (C25)

RNAV (GPS) RWY 29

NC-3, 23 JAN 2025 to 20 FEB 2025

NC-3, 23 JAN 2025 to 20 FEB 2025