

APP CRS 275°	Rwy Idg 3727
	TDZE 670
	Apt Elev 670

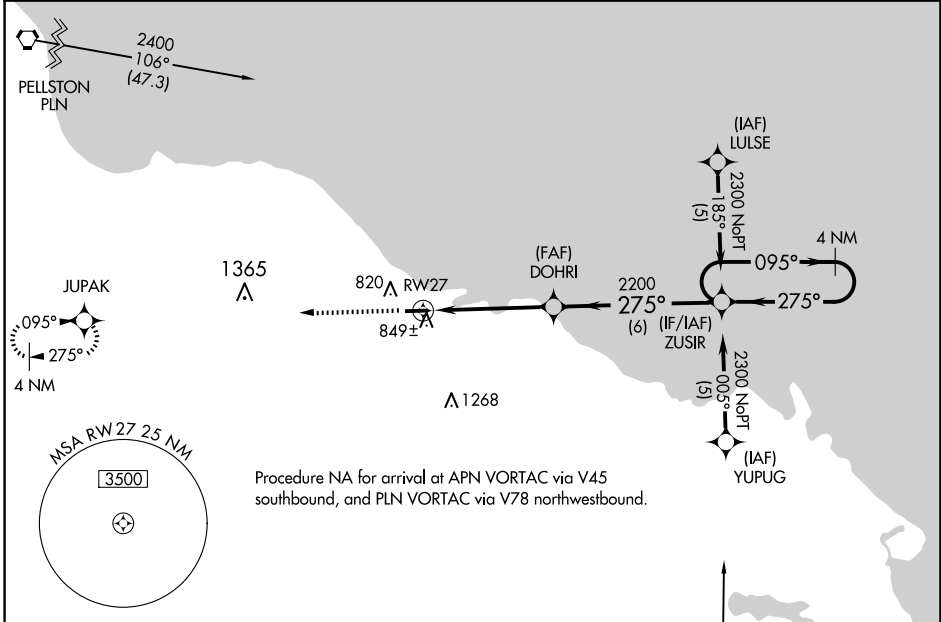
RNAV (GPS) RWY 27

PRESQUE ISLE COUNTY (PZQ)

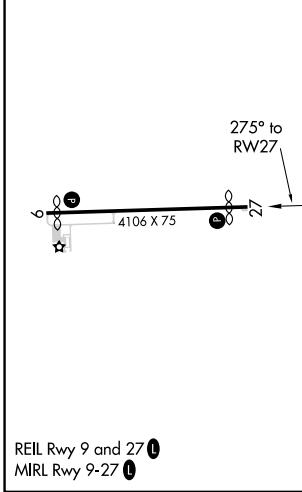
⚠ DME/DME RNP-0.3 NA. Circling NA at night to Rwy 9.
⚠ NA If local altimeter setting not received, use Alpena County Rgnl altimeter setting and increase all MDAs 60 feet.
 VDP NA with Alpena County Rgnl altimeter setting.

MISSED APPROACH: Climb to 2500 direct JUPAK and hold.

AWOS-3 118.125	ALPENA APP CON ★ 128.425 379.3	CTAF 122.9
--------------------------	--	----------------------



ELEV 670	TDZE 670
----------	----------



CATEGORY	A	B	C	D
LNAV MDA	1100-1	430 (500-1)	1100-1¼ 430 (500-1¼)	NA
CIRCLING	1200-1 530 (600-1)	1240-1 570 (600-1)	1260-1½ 590 (600-1½)	NA

EC-1, 23 JAN 2025 to 20 FEB 2025

EC-1, 23 JAN 2025 to 20 FEB 2025