

| | | |
|-------------|----------|-------------|
| APP CRS | Rwy Idg | 3886 |
| 095° | TDZE | 669 |
| | Apt Elev | 670 |

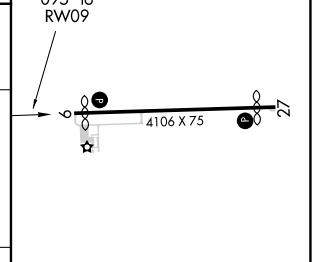
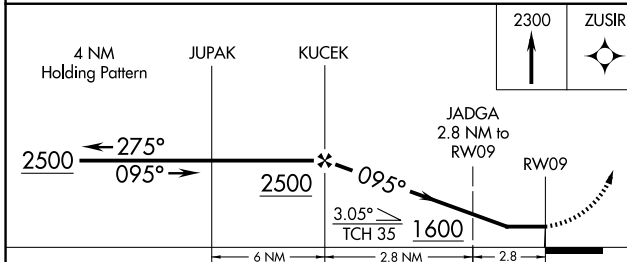
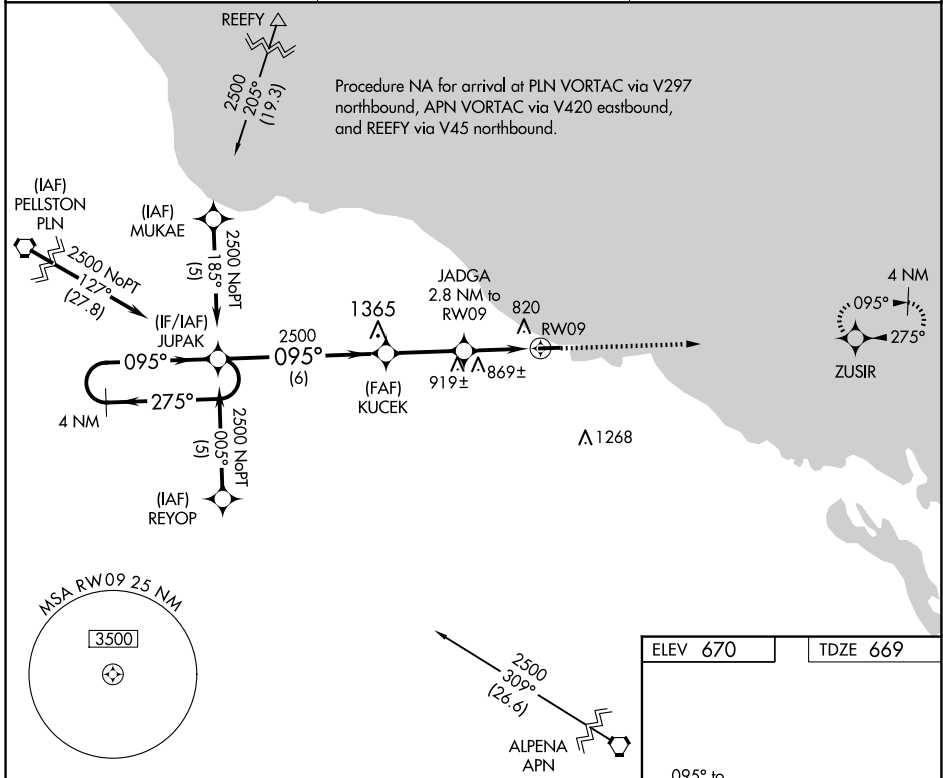
RNAV (GPS) RWY 9

PRESQUE ISLE COUNTY (PZQ)

RNP APCH.
 ▼ If local altimeter setting not received, use Alpena County Rgnl altimeter setting and increase all MDAs 60 feet. Straight-in/Circling Rwy 9 NA at night. Rwy 9 helicopter visibility reduction below 1 SM NA.
 ▲ NA

MISSED APPROACH: Climb to 2300 direct ZUSIR and hold.

| | | |
|--------------------------|--|----------------------|
| AWOS-3 118.125 | ALPENA APP CON * 128.425 379.3 | CTAF 122.9 |
|--------------------------|--|----------------------|



| CATEGORY | A | B | C | D |
|----------|-----------------------|-----------------------|-------------------------|----|
| LNAV MDA | 1120-1 | 451 (500-1) | 1120-1¼ 451 (500-1¼) | NA |
| CIRCLING | 1200-1 530 (600-1) | 1240-1 570 (600-1) | 1260-1½ 590 (600-1½) | NA |

ELEV 670 TDZE 669

REIL Rwy 9 and 27
 MRL Rwy 9-27

EC-1, 23 JAN 2025 to 20 FEB 2025

EC-1, 23 JAN 2025 to 20 FEB 2025