

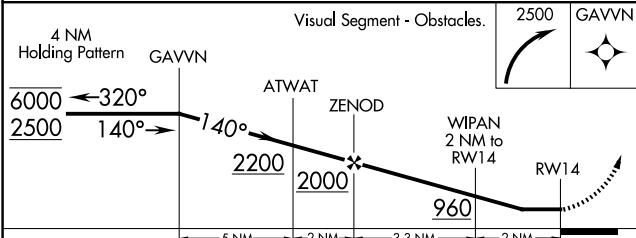
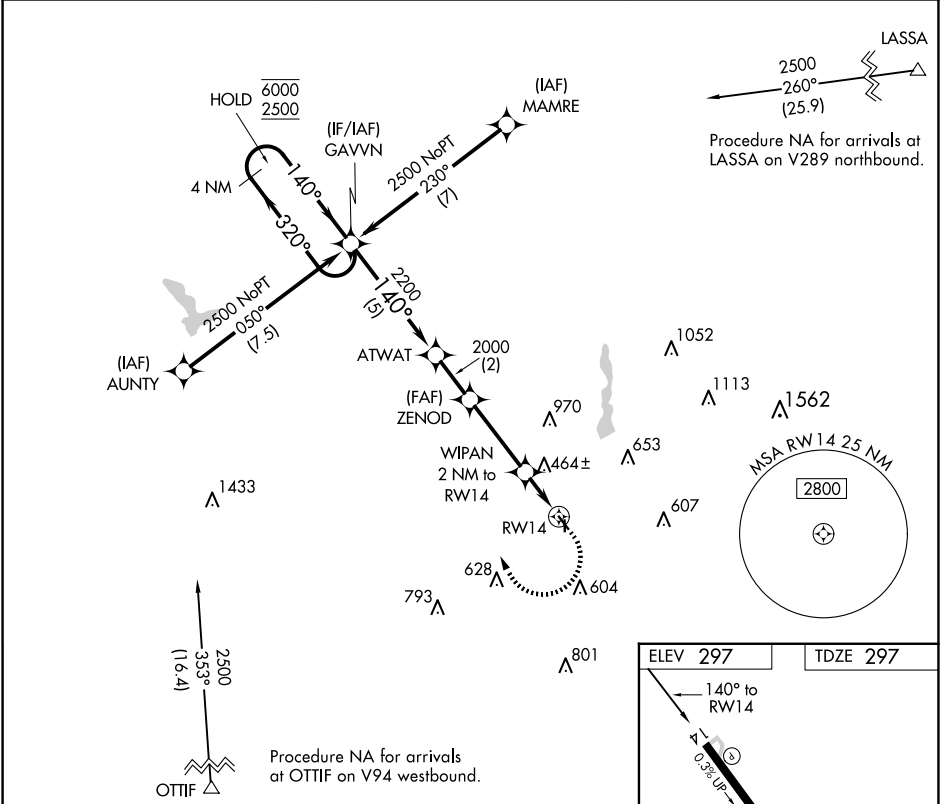
APP CRS 140°	Rwy Idg 3299
	TDZE 297
	Apt Elev 297

RNAV (GPS) RWY 14

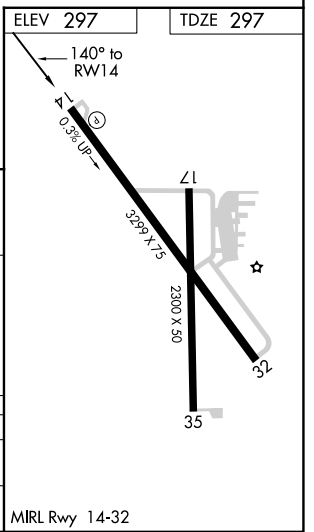
GLADEWATER MUNI (Ø7F')

RNP APCH.	<p>Procedure NA at night. Rwy 14 helicopter visibility reduction below 1 SM NA. Use Gilmer altimeter setting, when not received use Longview altimeter setting and increase all MDA 20 feet and increase LNAV Cat C visibility ½ SM.</p>	<p>MISSED APPROACH: Climbing right turn to 2500 direct GAVVN and hold.</p>
-----------	--	--

JXI AWOS-3PT 120.25	LONGVIEW APP CON ★ 124.275 257.975	CTAF 122.9
-------------------------------	--	----------------------



CATEGORY	A	B	C	D
LNAV MDA	800-1 503 (600-1)	503 (600-1)	800-1 3/8 503 (600-1 3/8)	NA
CIRCLING	880-1 583 (600-1)	1000-1 703 (800-1)	1000-2 703 (800-2)	NA



SC-2, 23 JAN 2025 to 20 FEB 2025

SC-2, 23 JAN 2025 to 20 FEB 2025