

| | | |
|-------------|----------|-------------|
| APP CRS | Rwy Idg | 4001 |
| 178° | TDZE | 1214 |
| | Apt Elev | 1226 |

RNAV (GPS) RWY 18

CHEROKEE COUNTY RGNL (CKP)

RNP APCH.

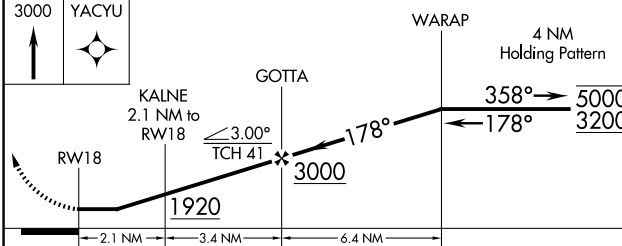
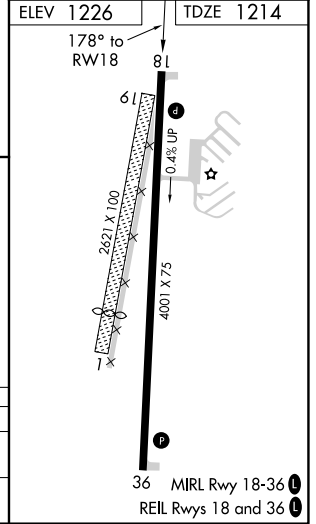
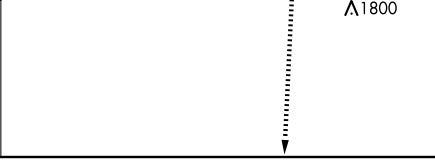
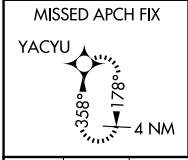
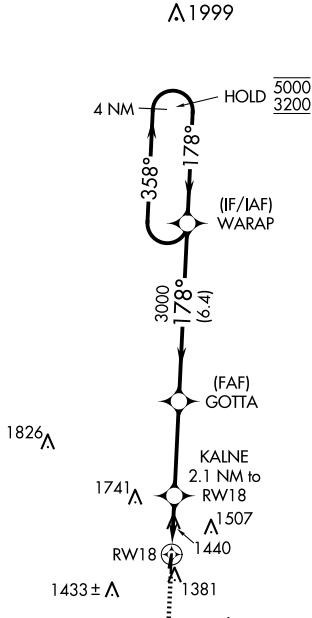
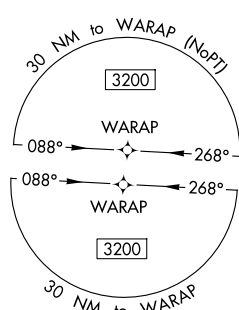
▼ Circling NA to Rwys 1 and 19. Rwy 18 helicopter visibility reduction below 1 SM NA. Rwy 18 Straight-in and Circling NA at night.

MISSED APPROACH: Climb to 3000 direct YACYU and hold.

AWOS-3
119.225

MINNEAPOLIS CENTER
125.025 235.625

UNICOM
122.8 (CTAF) 0



| CATEGORY | A | B | C | D |
|-------------------|-----------------------|-----------------------|-------------------------|------------------------|
| LNVA MDA | 1740-1 | 526 (600-1) | 1740-1½ | 526 (600-1½) |
| C CIRCLING | 1760-1 534 (600-1) | 1820-1 594 (600-1) | 2100-2½ 874 (900-2½) | 2160-3 934 (1000-3) |

NC-3, 23 JAN 2025 to 20 FEB 2025

NC-3, 23 JAN 2025 to 20 FEB 2025