

WAAS CH <b>99421</b> <b>W08A</b>	APP CRS <b>081°</b>	Rwy ldg TDZE Apt Elev <b>3000</b> <b>534</b> <b>534</b>
--	------------------------	--

# RNAV (GPS) RWY 8

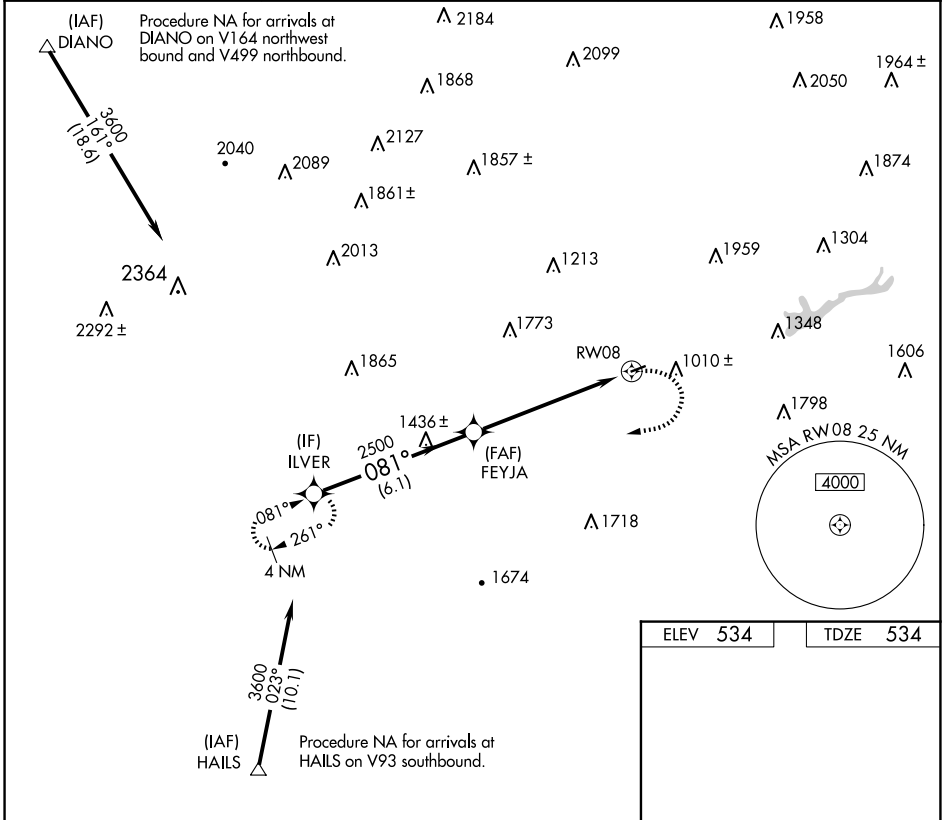
JAKE ARNER MEML (22N)

RNP APCH.

When local altimeter setting not received, use Lehigh Valley Intl altimeter setting and increase all MDA 60 feet. Rwy 8 helicopter visibility reduction below 3/4 SM NA.

MISSED APPROACH: Climbing right turn to 3600 direct ILVER and hold.

AWOS-3PT <b>119.350</b>	ALLENTOWN APP CON <b>119.65 124.45 351.8</b>	UNICOM <b>123.05 (CTAF) 0</b>
----------------------------	---	----------------------------------



ELEV 534	TDZE 534
----------	----------

MIRL Rwy 8-26 0  
REIL Rwy 8 and 26 0

CATEGORY	A	B	C	D
LP MDA	1540-1¼ 1006 (1100-1¼)	1540-1½ 1006 (1100-1½)	NA	
LNAV MDA	1600-1¼ 1066 (1100-1¼)	1600-1½ 1066 (1100-1½)	NA	

NE-4, 23 JAN 2025 to 20 FEB 2025

NE-4, 23 JAN 2025 to 20 FEB 2025