

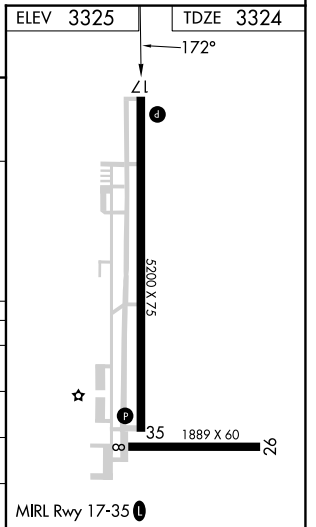
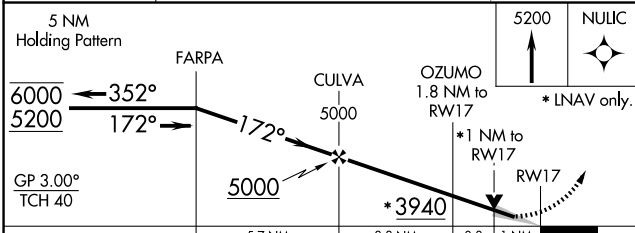
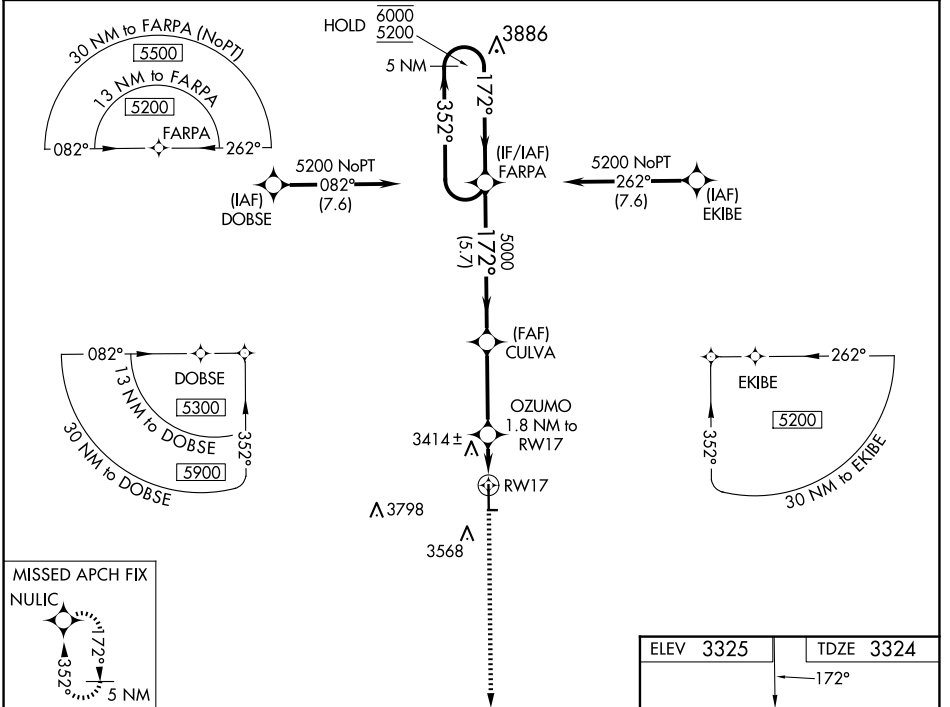
WAAS CH 90243 W17A	APP CRS 172°	Rwy Idg TDZE Apt Elev	5200 3324 3325
--	------------------------	-----------------------------	---

RNAV (GPS) RWY 17

STANTON COUNTY MUNI (JHN)

RNP APCH.	MISSED APPROACH: Climb to 5200 direct NULIC and hold.
-----------	---

AWOS-3PT 124.175	KANSAS CITY CENTER 125.2 285.425	UNICOM 122.8 (CTAF) 0
----------------------------	--	---------------------------------



CATEGORY	A	B	C	D
LPV DA		3524-1	200 (200-1)	
LNAV/VNAV DA		3574-1	250 (300-1)	
LNAV MDA		3680-1	356 (400-1)	
C CIRCLING	3880-1	555 (600-1)	4040-2 715 (800-2)	4040-2 1/4 715 (800-2 1/4)

NC-2, 23 JAN 2025 to 20 FEB 2025

NC-2, 23 JAN 2025 to 20 FEB 2025