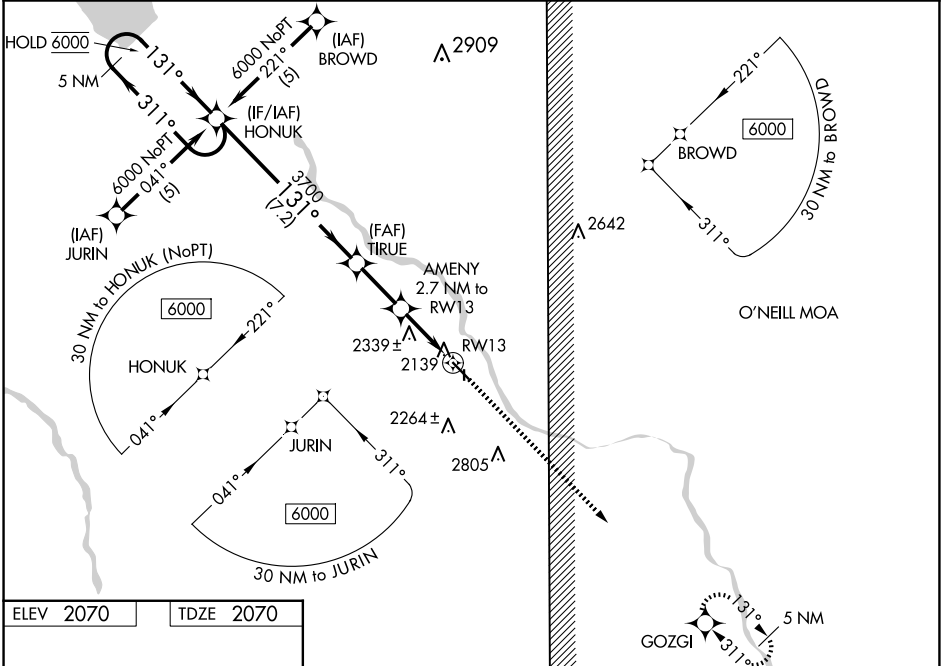


WAAS CH 90312 W13A	APP CRS 131°	Rwy Idg TDZE 4721 2070 Apt Elev 2070
--	------------------------	--

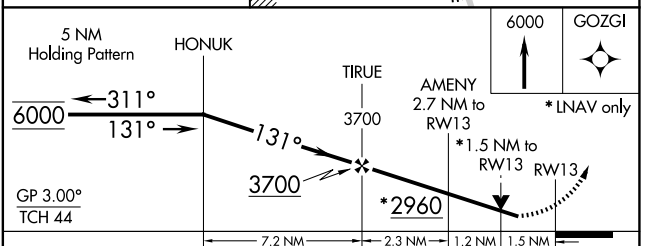
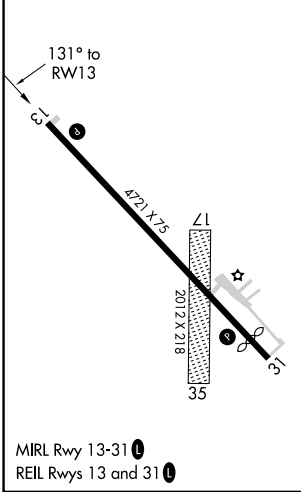
RNAV (GPS) RWY 13

EVELYN SHARP FLD (ODX)

RNP APCH.	MISSED APPROACH: Climb to 6000 direct GOZGI and hold, continue climb-in-hold to 6000.	
<p>⚠ Circling NA to Rwy 17 and 35. Rwy 13 helicopter visibility reduction below 3/4 SM NA. For uncompensated Baro-VNAV systems, LNAV/VNAV NA below -23°C or above 54°C.</p>		
ASOS 119.925	MINNEAPOLIS CENTER 119.4 278.8	UNICOM 122.8 (CTAF) 0



ELEV 2070	TDZE 2070
-----------	-----------



CATEGORY	A	B	C	D
LPV DA	2376-1	306 (400-1)		NA
LNAV/VNAV DA	2670-1 ³ / ₄	600 (600-1 ³ / ₄)		NA
LNAV MDA	2600-1	530 (600-1)		NA
C CIRCLING	2680-1	610 (700-1)		NA

NC-2, 23 JAN 2025 to 20 FEB 2025

NC-2, 23 JAN 2025 to 20 FEB 2025