

WAAS CH 40202 W36A	APP CRS 359°	Rwy Idg TDZE Apt Elev	5101 1228 1228
--	------------------------	-----------------------------	---

RNAV (GPS) RWY 36

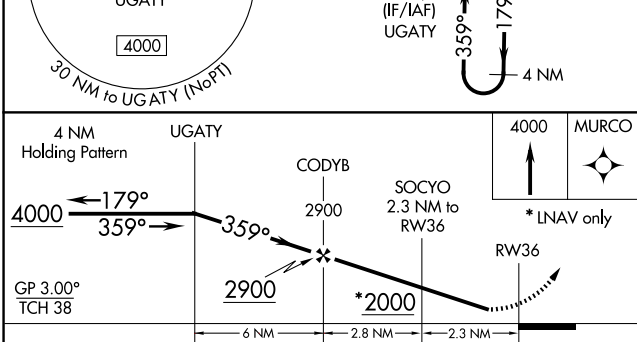
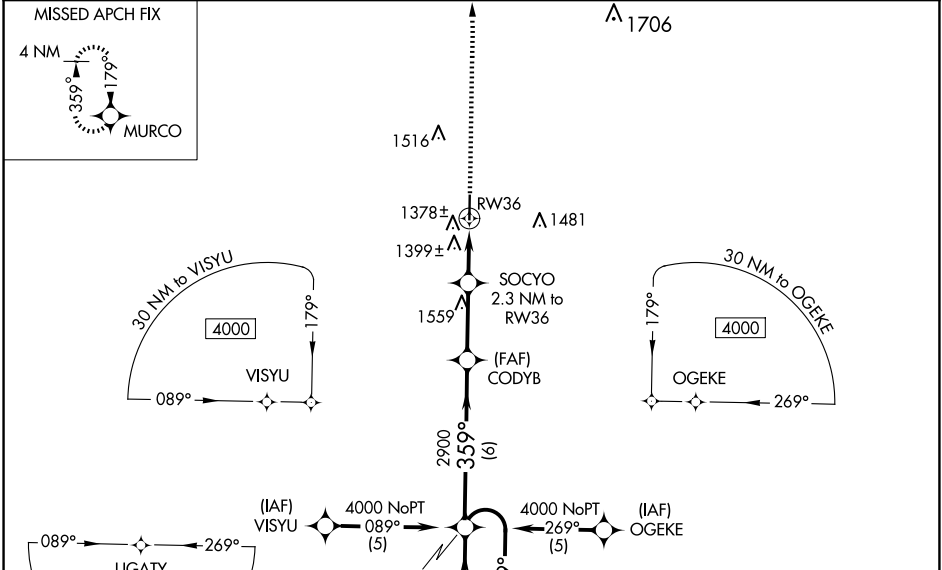
WEST PLAINS RGNL (UNO)

RNP APCH - GPS.

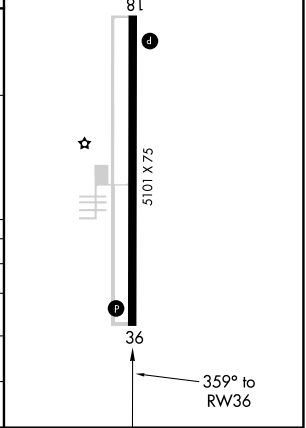
⚠ Baro-VNAV NA when using Mountain Home altimeter setting. Visibility reduction by helicopters NA. When local altimeter setting not received, use Mountain Home, AR altimeter setting: increase LPV DA to 1657 feet and all visibilities ½ SM; increase LNAV/VNAV DA to 1850 feet and all visibilities ¼ SM; increase all MDAs 140 feet and visibility LNAV Cat C ¼ SM and Circling Cat C ½ SM. For uncompensated Baro-VNAV systems, LNAV/VNAV NA below -17°C (2°F) or above 54°C (130°F).

MISSED APPROACH: Climb to 4000 direct MURCO and hold.

ASOS 123,825	MEMPHIS CENTER 120,075 289.4	UNICOM 122.8 (CTAF) 1
------------------------	--	---------------------------------



ELEV 1228	TDZE 1228
MIRL Rwy 18-36 1	
REIL Rwy 18 and 36 1	



CATEGORY	A	B	C	D
LPV DA	1520-1 292 (300-1)			NA
LNAV/VNAV DA	1713-1¾ 485 (500-1¾)			NA
LNAV MDA	1660-1 432 (500-1)		1660-1¼ 432 (500-1¼)	
CIRCLING	1720-1 492 (500-1)	1740-1 512 (600-1)	1820-1½ 592 (600-1½)	

NC-3, 23 JAN 2025 to 20 FEB 2025

NC-3, 23 JAN 2025 to 20 FEB 2025