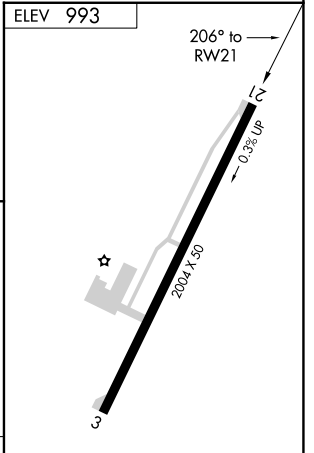
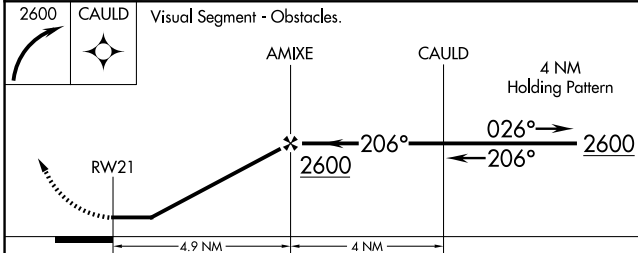
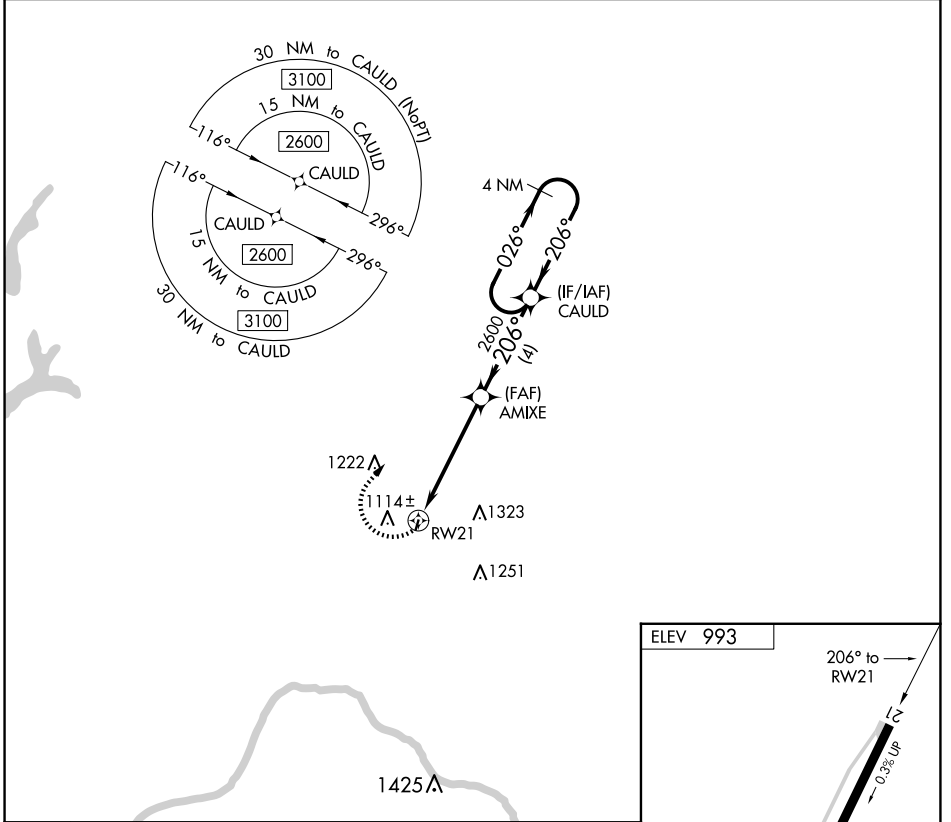


APP CRS <b>206°</b>	Rwy Idg TDZE Apt Elev	<b>N/A</b> <b>N/A</b> <b>993</b>
------------------------	-----------------------------	--

# RNAV (GPS)-B

EXCELSIOR SPRINGS MEML (3EX)

<b>NA</b> Use Charles B Wheeler Downtown altimeter setting. DME/DME RNP-0.3 NA. Procedure NA at night. Helicopter visibility reduction below 1 SM NA.	MISSED APPROACH: Climbing right turn to 2600 direct CAULD and hold.
KANSAS CITY APP CON <b>118.4 307.35</b>	UNICOM <b>122.7 (CTAF)</b>



CATEGORY	A	B	C	D
<b>C</b> CIRCLING	1660-1 667 (700-1)		NA	

IURL Rwy 3-21

NC-3, 23 JAN 2025 to 20 FEB 2025

NC-3, 23 JAN 2025 to 20 FEB 2025