

APP CRS <b>204°</b>	Rwy ldg TDZE Apt Elev	<b>2672</b> <b>181</b> <b>181</b>
------------------------	-----------------------------	---

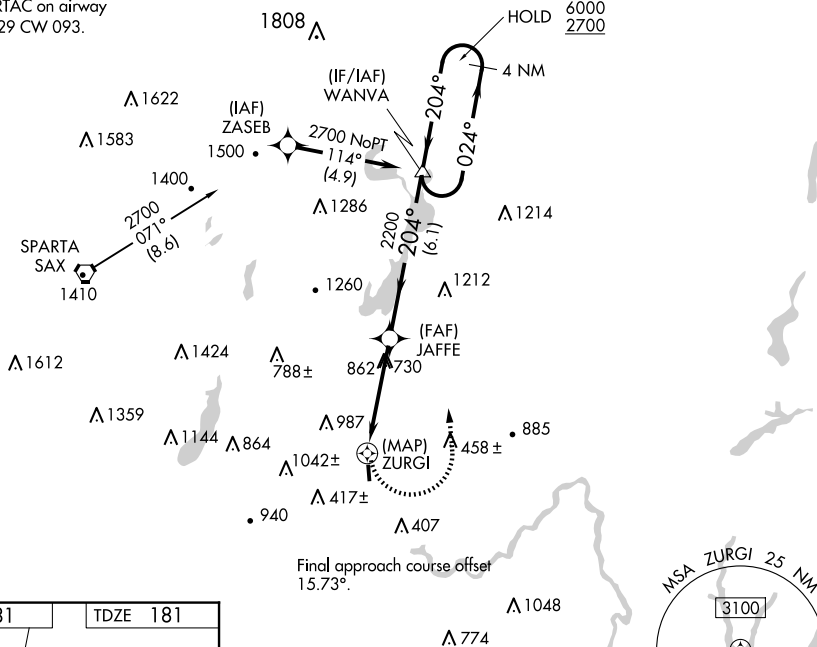
# RNAV (GPS) RWY 19

LINCOLN PARK (NØ7)

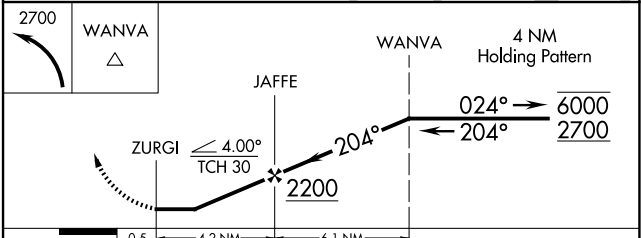
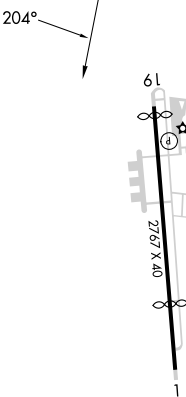
RNP APCH.	<p>▼ Rwy 19 helicopter visibility reduction below 1 SM NA. ▲ NA Use Teterboro altimeter setting. Procedure NA at night.</p>	MISSED APPROACH: Climbing left turn to 2700 direct WANVA and hold.
-----------	---	--

TEB D-ATIS <b>114.2 132.85</b>	NEWARK APP CON <b>127.6 379.9</b>	GCO <b>121.725</b>	UNICOM <b>122.8 (CTAF) Ø</b>
-----------------------------------	--------------------------------------	-----------------------	---------------------------------

Procedure NA for arrivals at SAX VORTAC on airway radials 029 CW 093.



ELEV <b>181</b>	TDZE <b>181</b>
-----------------	-----------------



CATEGORY	A	B	C	D
LNAV MDA	1300-1¼ 1119 (1200-1¼)		NA	
CIRCLING	1300-1¼ 1119 (1200-1¼)		NA	

NE-2, 23 JAN 2025 to 20 FEB 2025

NE-2, 23 JAN 2025 to 20 FEB 2025