

SW-4, 23 JAN 2025 to 20 FEB 2025

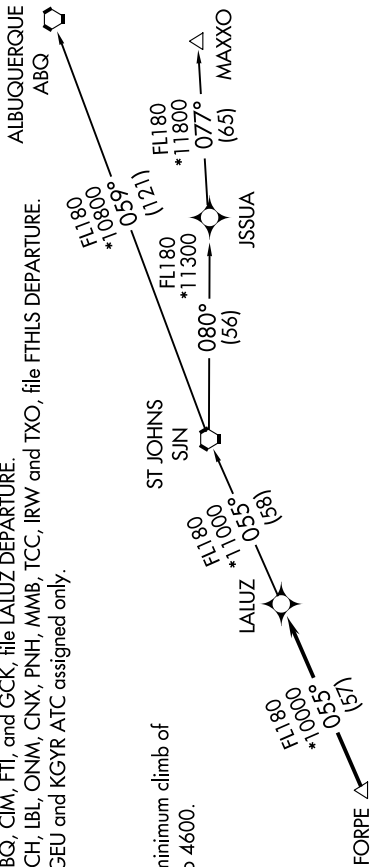
**TOP ALTITUDE:  
ASSIGNED BY ATC**

- NOTE: RNAV 1.
- NOTE: Turbojets and turboprops only.
- NOTE: RADAR required.
- NOTE: GPS required.
- NOTE: SJN TRANSITION for ABQ terminal arrivals only.
- NOTE: MAXXO TRANSITION ATC assigned only.
- NOTE: Aircraft filing over DEN, RSK, ALS, and points north of ALS, file YOTES DEPARTURE.
- NOTE: Aircraft filing over ABQ, CIM, FTI, and GCK, file LALUZ DEPARTURE.
- NOTE: Aircraft filing over ACH, IBL, ONM, CNX, PNH, MMB, TCC, IRW and TXO, file FTHLS DEPARTURE.
- NOTE: Aircraft departing KGEU and KGYR ATC assigned only.

- ATIS 126.5
- CINC DEL 123.9
- GND CON 121.8
- DEER VALLEY TOWER\* 118.4 (Rwy 7R-25L)
- 120.2 (Rwy 7L-25R)
- PHOENIX DEP CON 120.7 239.0

**TAKEOFF MINIMUMS**

Rwys 7L/R: NA-obstacles.  
 Rwys 25L/R: Standard with minimum climb of 370' per NM to 4600.



**DEPARTURE ROUTE DESCRIPTION**

TAKEOFF RUNWAYS 25L/R: Climbing right turn heading 320° or as assigned by ATC, thence . . .

. . . expect RADAR vectors to FORPE, then on track 055° to LALUZ, then on (transition). Maintain ATC assigned altitude, expect filed altitude 3 minutes after departure.

ALBUQUERQUE TRANSITION (LALUZ6.ABQ)

MAXXO TRANSITION (LALUZ6.MAXXO)

ST JOHNS TRANSITION (LALUZ6.SJN)



NOTE: Chart not to scale.

SW-4, 23 JAN 2025 to 20 FEB 2025