

APP CRS	Rwy Idg	N/A
254°	TDZE	N/A
	Apt Elev	1478

RNAV (GPS)-B

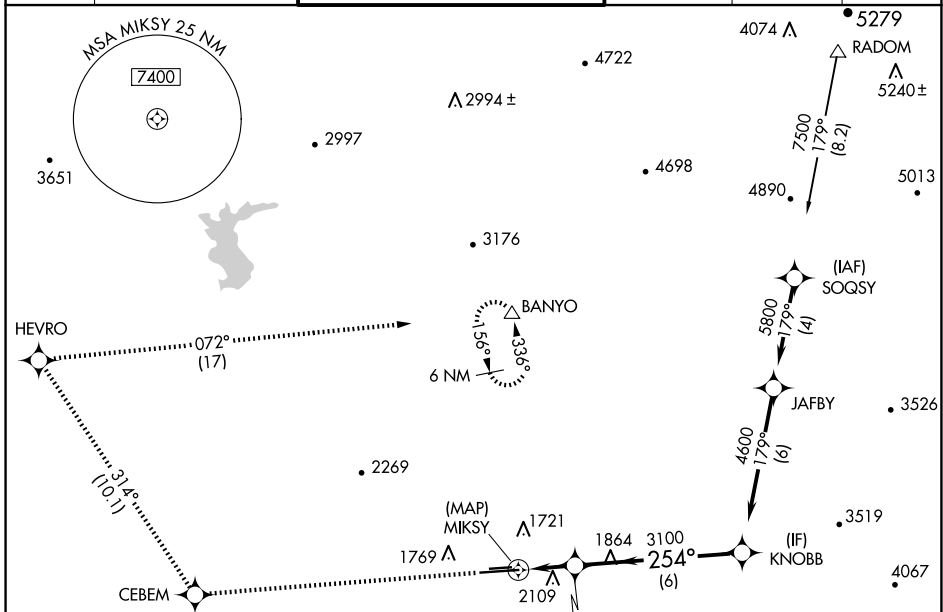
PHOENIX DEER VALLEY (DVT)

RNP APCH - GPS.

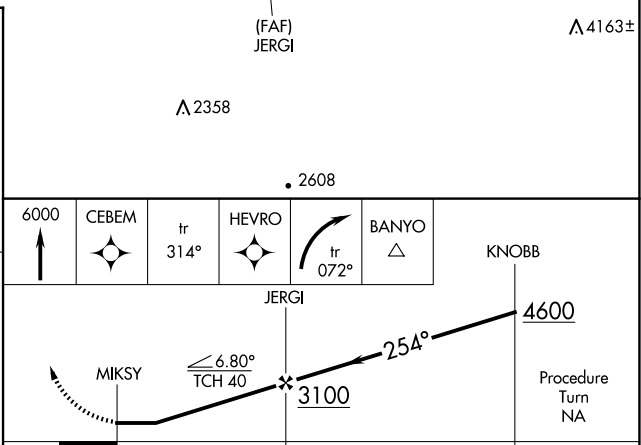
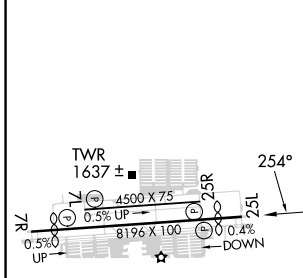
⚠ When VGSI inop, Circling to Rwy 25R NA at night. Circling not authorized at night north of Rwy 7R-25L. When local altimeter setting not received, use Scottsdale altimeter setting and increase all MDAs 40 feet and Circling Cat B visibility 1/2 SM.

MISSED APPROACH: Climb to 6000 direct CEBEM and on track 314° to HEVRO and right turn on track 072° to BANYO and hold.

ATIS	PHOENIX APP CON	DEER VALLEY TOWER ★	GND CON	CLNC DEL	UNICOM
126.5	120.7 239.0	118.4 (070°-250°) (CTAF) 120.2 (251°-069°)	121.8	123.9	122.95



ELEV 1478 **D**



MIRL Rwys 7L-25R and 7R-25L				
REIL Rwys 7L, 7R, 25L, and 25R				
CATEGORY	A	B	C	D
CIRCLING	2400-1¼ 922 (1000-1¼)	2420-1¼ 942 (1000-1¼)	2580-3 1102 (1200-3)	NA

SW-4, 23 JAN 2025 to 20 FEB 2025

SW-4, 23 JAN 2025 to 20 FEB 2025