


|  |                        |   |             |
|--|------------------------|---|-------------|
| WAAS<br>CH <b>99328</b><br><b>W30A</b> | APP CRS<br><b>295°</b> | Rwy Idg<br>TDZE <b>958</b><br>Apt Elev <b>961</b> | <b>3707</b> |
|--|------------------------|---|-------------|

# RNAV (GPS) RWY 30

AIRLAKE (LVN)

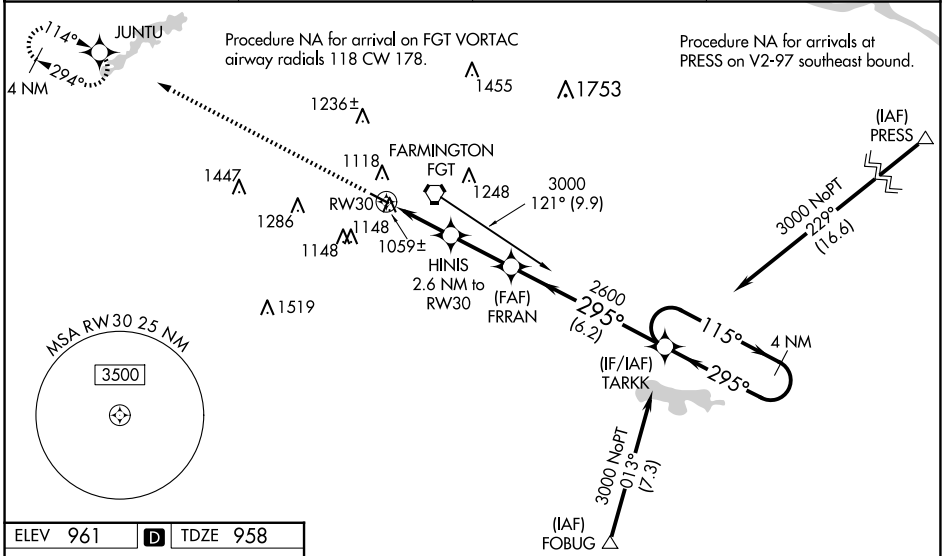
RNP APCH.

**⚠** Baro-VNAV and VDP NA when using Minneapolis-St Paul Intl/Wold-Chamberlain altimeter setting. For uncompensated Baro-VNAV systems, LNAV/VNAV NA below -16°C or above 37°C. When local altimeter setting not received, use Minneapolis-St Paul Intl/Wold-Chamberlain altimeter setting: increase LPV DA to 1210 feet; increase LNAV/VNAV DA to 1298; increase all MDAs 60 feet. For inop ALS, increase LNAV/VNAV all Cats visibility to ¾ SM and LNAV all Cats visibility to 1 SM. For inop ALS when using Minneapolis-St Paul Intl/Wold-Chamberlain altimeter setting, increase LNAV/VNAV all Cats visibility to 1, and LNAV Cat A/B to 1. Inoperative table does not apply to LPV. Rwy 30 helicopter visibility reduction below ¾ SM NA. When Circling to Rwy 12 at night, operational VGSI required, remain on or above VGSI glidepath until threshold.

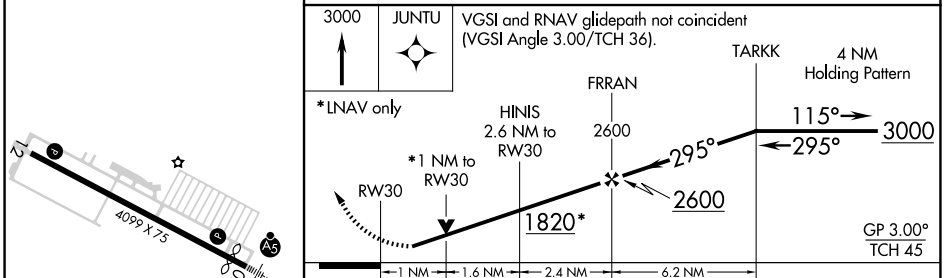
MALSR 

MISSED APPROACH: Climb to 3000 direct JUNTU and hold.

|                        |   |                           |                                 |
|------------------------|---|---------------------------|---------------------------------|
| AWOS-3<br><b>118.0</b> | MINNEAPOLIS APP CON<br><b>134.7 284.7</b> | CLNC DEL<br><b>118.95</b> | UNICOM<br><b>123.0 (CTAF) 0</b> |
|------------------------|---|---------------------------|---------------------------------|



|          |          |          |
|----------|----------|----------|
| ELEV 961 | <b>D</b> | TDZE 958 |
|----------|----------|----------|



| CATEGORY          | A      | B           | C                     | D                       |
|-------------------|--------|-------------|-----------------------|-------------------------|
| LPV DA            |        | 1158-¾      | 200 (200-¾)           |                         |
| LNAV/VNAV DA      |        | 1246-¾      | 288 (300-¾)           |                         |
| LNAV MDA          |        | 1320-¾      | 362 (400-¾)           |                         |
| <b>C</b> CIRCLING | 1460-1 | 499 (500-1) | 1660-2<br>699 (700-2) | 1700-2¼<br>739 (800-2¼) |

NC-1, 23 JAN 2025 to 20 FEB 2025

NC-1, 23 JAN 2025 to 20 FEB 2025

REIL Rwy 12 **0**  
HIRL Rwy 12-30 **0**