

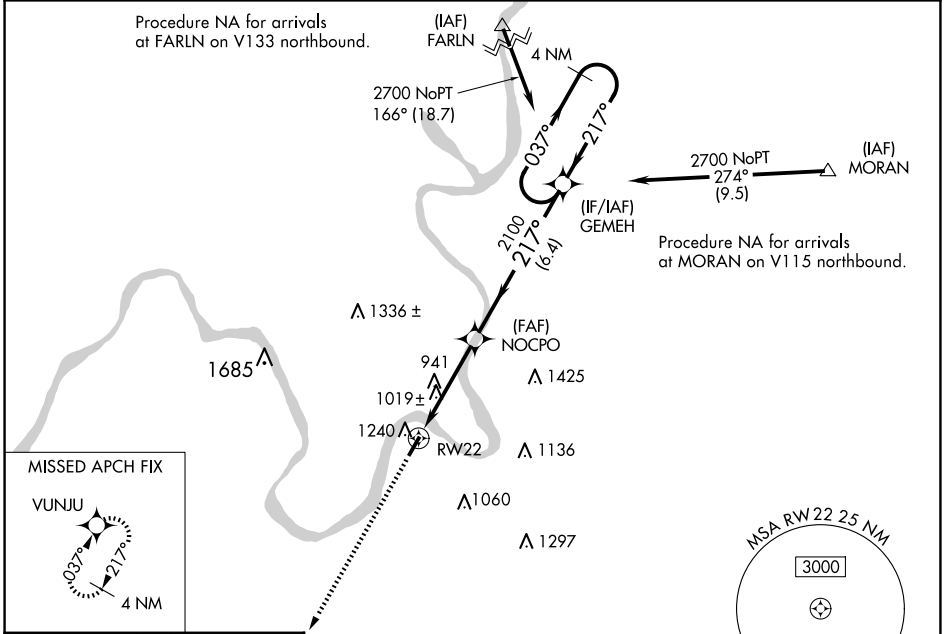
WAAS CH 61323 W22A	APP CRS 217°	Rwy Idg TDZE 758 Apt Elev 758	4000
--	------------------------	---	-------------

RNAV (GPS) RWY 22

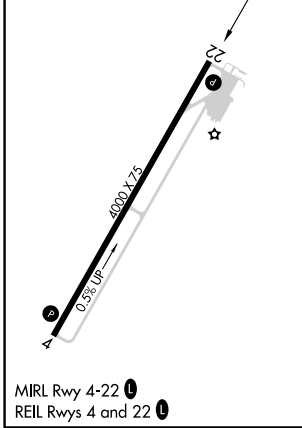
JACKSON COUNTY (I18)

RNP APCH.	When local altimeter setting not received, use Point Pleasant altimeter setting and increase all MDA 60 feet; increase LP and LNAV Cat C visibility ¼ mile. Circling Rwy 4 NA at night. Rwy 22 helicopter visibility reduction below ¾ SM NA.	MISSED APPROACH: Climb to 2600 direct VUNJU and hold.
-----------	---	--

AWOS-2 121.3	HUNTINGTON APP CON 128.4 270.1	UNICOM 122.8 (CTAF) 0
------------------------	--	---------------------------------



ELEV 758	TDZE 758
----------	----------



2600	VUNJU	VGSI and descent angles not coincident (VGSI Angle 4.00/TCH 50).		4 NM Holding Pattern GEME																				
<table border="1"> <thead> <tr> <th>CATEGORY</th> <th>A</th> <th>B</th> <th>C</th> <th>D</th> </tr> </thead> <tbody> <tr> <td>LP MDA</td> <td>1280-1</td> <td>522 (600-1)</td> <td>1280-1½ 522 (600-1½)</td> <td>NA</td> </tr> <tr> <td>LNAV MDA</td> <td>1540-1 782 (800-1)</td> <td>1540-1¼ 782 (800-1¼)</td> <td>1540-2½ 782 (800-2½)</td> <td>NA</td> </tr> <tr> <td>CIRCLING</td> <td>1600-1¼</td> <td>842 (900-1¼)</td> <td>1600-2½ 842 (900-2½)</td> <td>NA</td> </tr> </tbody> </table>					CATEGORY	A	B	C	D	LP MDA	1280-1	522 (600-1)	1280-1½ 522 (600-1½)	NA	LNAV MDA	1540-1 782 (800-1)	1540-1¼ 782 (800-1¼)	1540-2½ 782 (800-2½)	NA	CIRCLING	1600-1¼	842 (900-1¼)	1600-2½ 842 (900-2½)	NA
CATEGORY	A	B	C	D																				
LP MDA	1280-1	522 (600-1)	1280-1½ 522 (600-1½)	NA																				
LNAV MDA	1540-1 782 (800-1)	1540-1¼ 782 (800-1¼)	1540-2½ 782 (800-2½)	NA																				
CIRCLING	1600-1¼	842 (900-1¼)	1600-2½ 842 (900-2½)	NA																				

NE-4, 23 JAN 2025 to 20 FEB 2025

NE-4, 23 JAN 2025 to 20 FEB 2025