

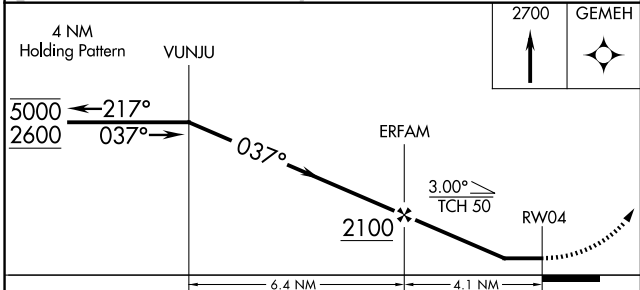
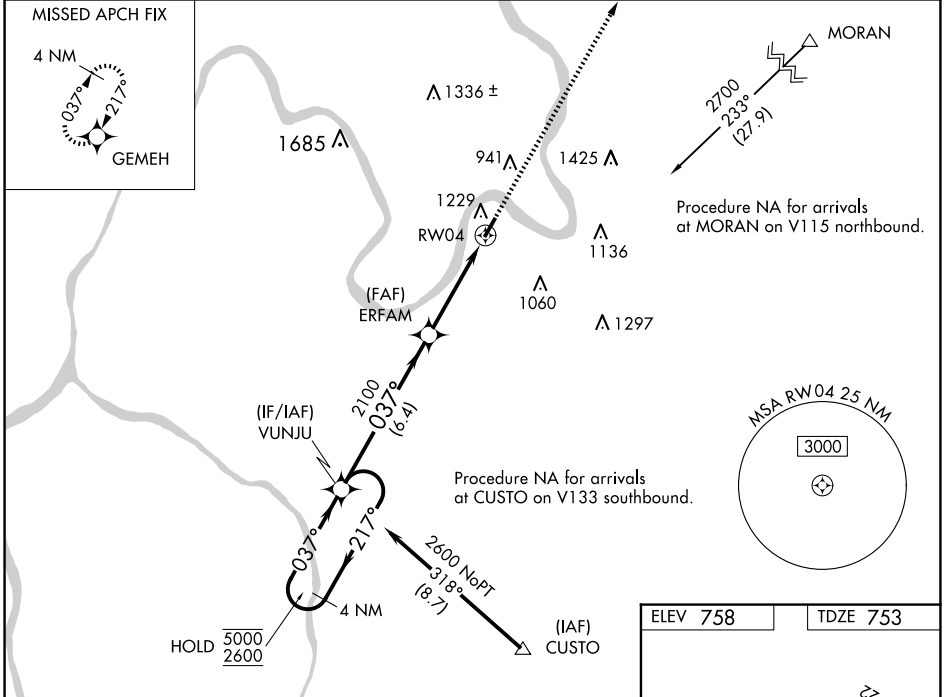
|             |          |             |
|-------------|----------|-------------|
| APP CRS     | Rwy Idg  | <b>4000</b> |
| <b>037°</b> | TDZE     | <b>753</b>  |
|             | Apt Elev | <b>758</b>  |

# RNAV (GPS) RWY 4

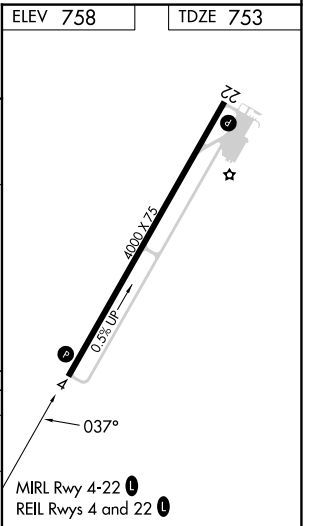
JACKSON COUNTY (I18)

|                 |   |  |
|-----------------|---|--|
| RNP APCH - GPS. |   | MISSED APPROACH:<br>Climb to 2700 direct GEMEH and hold. |
| <b>▽</b>        | Rwy 4 helicopter visibility reduction below 1 SM NA. When local altimeter setting not received, use Point Pleasant altimeter setting and increase all MDA 60 feet; increase LNAV Cat C visibility $\frac{1}{8}$ SM and Circling Cat C visibility $\frac{1}{4}$ SM. Straight-in Rwy 4 NA at night, Circling Rwy 4 NA at night. |  |

|                        |  |                                 |
|------------------------|--|---------------------------------|
| AWOS-2<br><b>121.3</b> | HUNTINGTON APP CON<br><b>128.4 270.1</b> | UNICOM<br><b>122.8 (CTAF) 0</b> |
|------------------------|--|---------------------------------|



| CATEGORY | A                    | B                          | C  | D  |
|----------|----------------------|----------------------------|--|----|
| LNAV MDA | 1400-1               | 647 (700-1)                | 1400- $1\frac{7}{8}$<br>647 (700- $1\frac{7}{8}$ ) | NA |
| CIRCLING | 1600- $1\frac{1}{4}$ | 842 (900- $1\frac{1}{4}$ ) | 1600- $2\frac{1}{2}$<br>842 (900- $2\frac{1}{2}$ ) | NA |



NE-4, 23 JAN 2025 to 20 FEB 2025

NE-4, 23 JAN 2025 to 20 FEB 2025