

WAAS CH <b>86730</b> <b>W34A</b>	APP CRS <b>339°</b>	Rwy Idg TDZE Apt Elev	<b>3298</b> <b>1023</b> <b>1023</b>
--	------------------------	-----------------------------	---

# RNAV (GPS) RWY 34

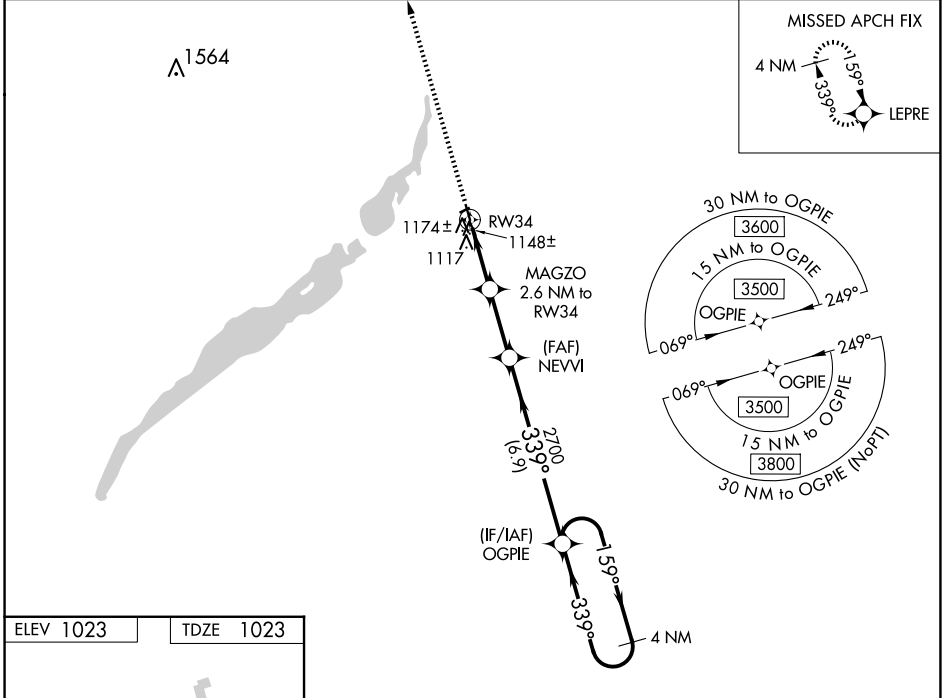
WHEATON MUNI (ETH)

RNP APCH - GPS.

**⚠** Rwy 34 helicopter visibility reduction below 3/4 SM NA. When local altimeter setting not received, use Wahpeton altimeter setting and increase all MDA 80 feet, increase LP and LNAV Cat C visibility to 3/8 SM. Circling NA to Rwy 6 and 24.

MISSED APPROACH: Climb to 3500 direct LEPRE and hold.

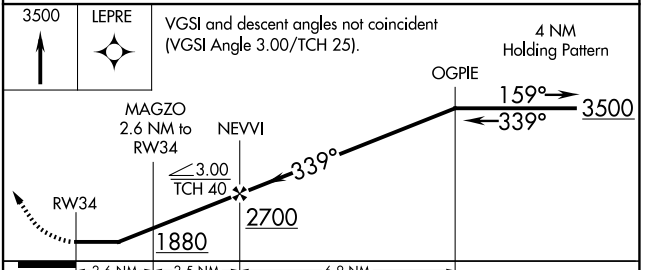
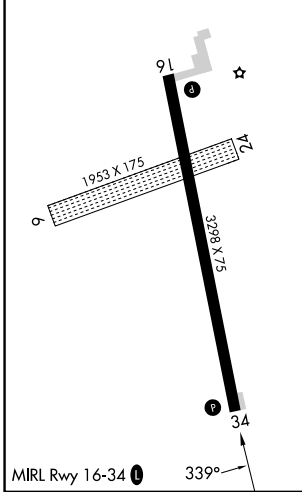
AWOS-3 <b>118.775</b>	MINNEAPOLIS CENTER <b>126.1 269.2</b>	UNICOM <b>122.8 (CTAF)</b> <b>📻</b>
--------------------------	--	--



NC-1, 23 JAN 2025 to 20 FEB 2025

NC-1, 23 JAN 2025 to 20 FEB 2025

ELEV 1023	TDZE 1023
-----------	-----------



CATEGORY	A	B	C	D
LP MDA	1400-1 377 (400-1)			NA
LNAV MDA	1440-1	417 (500-1)	1440-1 1/8 417 (500-1 1/8)	NA
CIRCLING	1480-1	457 (500-1)	1500-1 1/2 477 (500-1 1/2)	NA