

APP CRS	Rwy Idg	5010
271°	TDZE	777
	Apt Elev	778

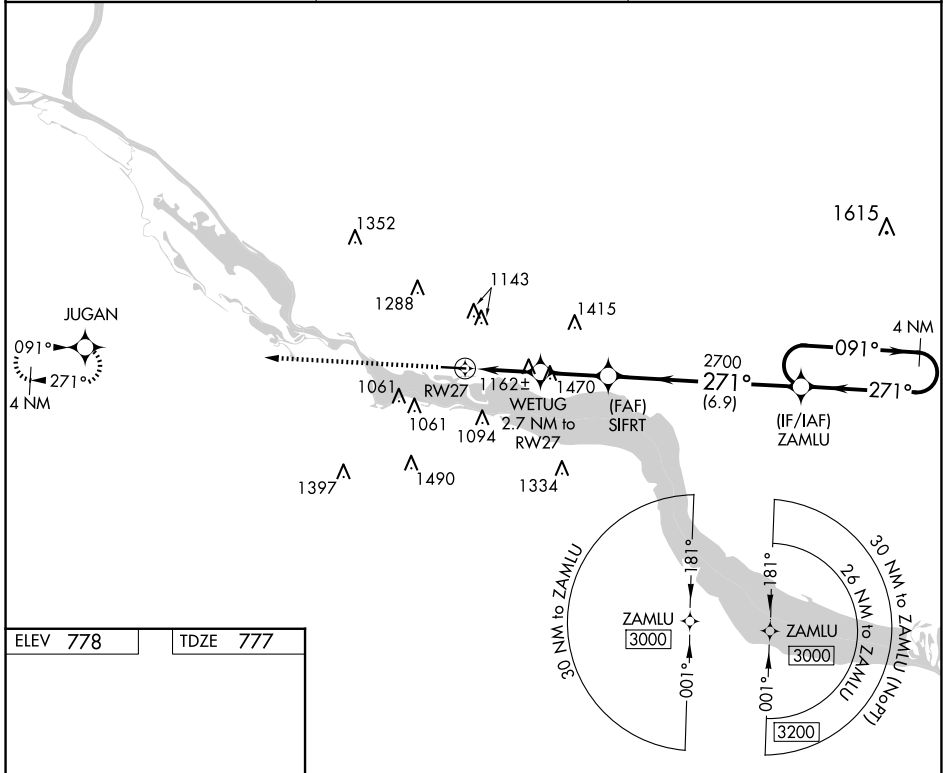
RNAV (GPS) RWY 27

RED WING RGNL (RGK)

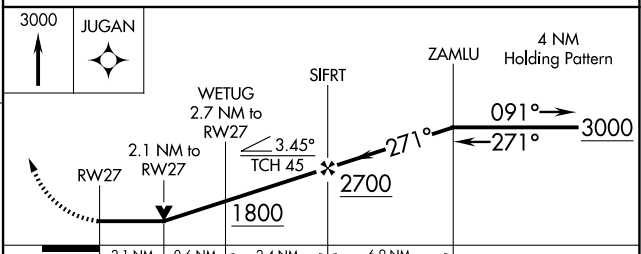
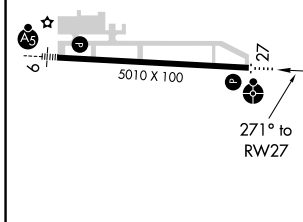
⚠ DME/DME RNP-0.3 NA. VDP NA with South St. Paul altimeter setting. When local altimeter setting not received, use South St. Paul altimeter setting; increase all MDA 80 feet and visibility LNAV Cat C and Circling Cat C $\frac{1}{2}$ SM and Circling Cat A/B $\frac{1}{4}$ SM. Helicopter visibility reduction below $\frac{3}{4}$ SM NA. Inop table does not apply to LNAV Cat C.

ODALS
 MISSED APPROACH: Climb to 3000 direct JUGAN and hold.

AWOS-3 119.25	MINNEAPOLIS APP CON 121.2 335.65	UNICOM 123.05 (CTAF)
-------------------------	--	--------------------------------



ELEV 778	TDZE 777
-----------------	-----------------



CATEGORY	A	B	C	D
LNAV MDA	1520- $\frac{3}{4}$ 743 (800- $\frac{3}{4}$)	1520-1 $\frac{1}{4}$ 743 (800-1 $\frac{1}{4}$)	1520-2 743 (800-2)	NA
CIRCLING	1520-1 742 (800-1)		1640-2 $\frac{1}{2}$ 862 (900-2 $\frac{1}{2}$)	NA

NC-1, 23 JAN 2025 to 20 FEB 2025

NC-1, 23 JAN 2025 to 20 FEB 2025