

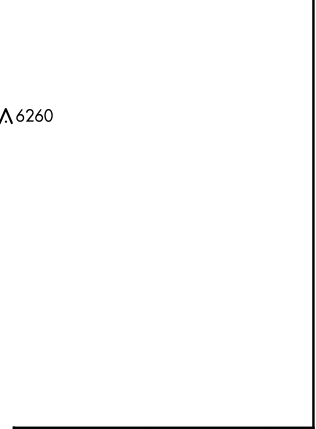
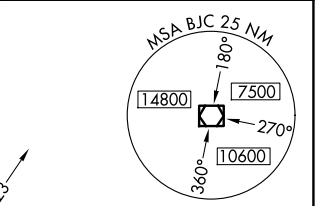
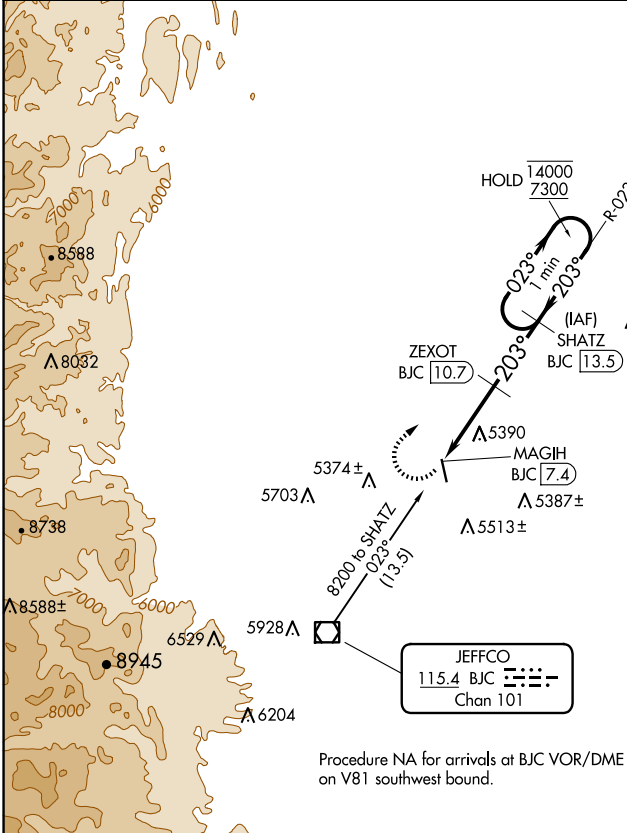
VOR/DME BJC 115.4 Chan 101	APP CRS 203°	Rwy Idg TDZE Apt Elev	N/A N/A 5119
--	------------------------	-----------------------------	---

VOR-A

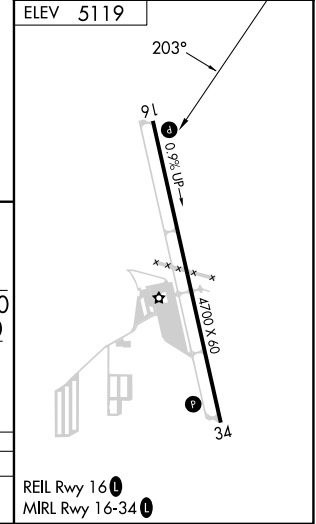
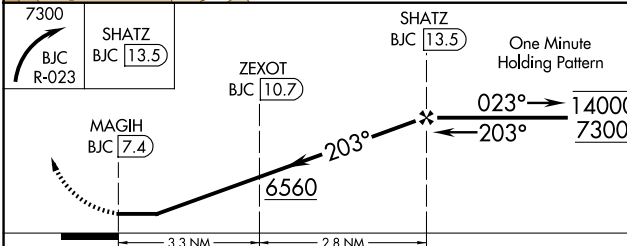
ERIE MUNI (EIK)

DME required. MISSED APPROACH: Climbing right turn to 7300 on BJC VOR/DME R-023 to SHATZ/13.5 DME and hold, continue climb-in-hold to 7300.

AWOS-3PT 133.825	DENVER APP CON 125.12 263.02	UNICOM 123.0 (CTAF)
----------------------------	--	-------------------------------



Procedure NA for arrivals at BJC VOR/DME on V81 southwest bound.



CATEGORY	A	B	C	D
CIRCLING	5700-1 581 (600-1)	5880-1 761 (800-1)	5880-2 1/4 761 (800-2 1/4)	NA

SW-1, 23 JAN 2025 to 20 FEB 2025

SW-1, 23 JAN 2025 to 20 FEB 2025