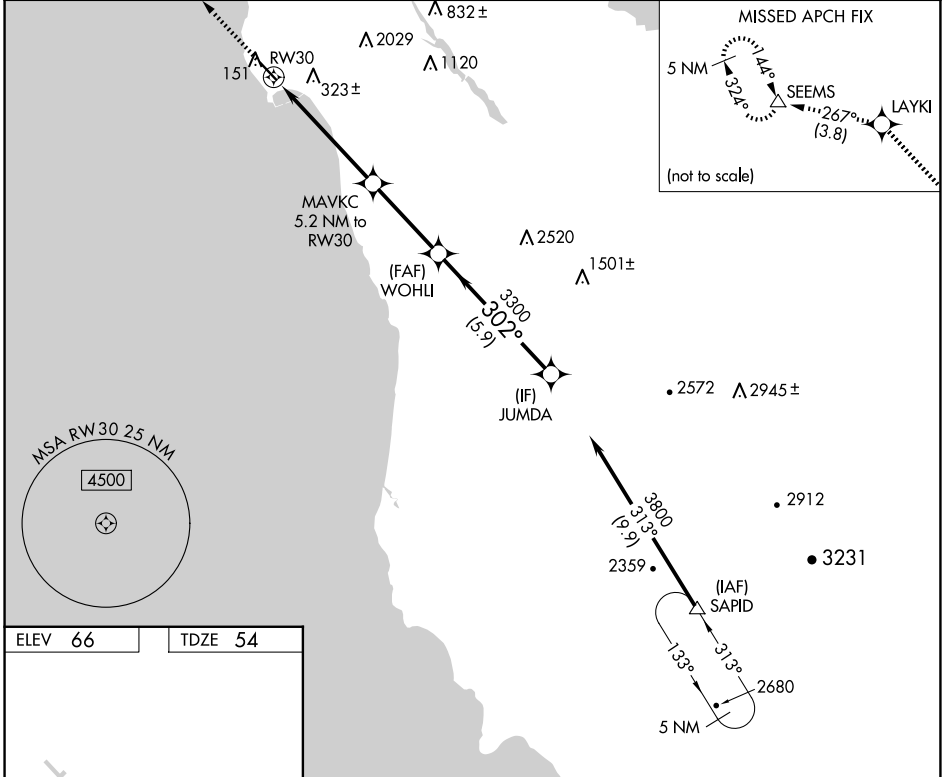


WAAS CH 50302 W30A	APP CRS 302°	Rwy Idg TDZE Apt Elev	4238 54 66
--	------------------------	-----------------------------	---------------------------------------

RNAV (GPS) RWY 30

HALF MOON BAY (HAF')

RNP APCH. ▽	MISSED APPROACH: Climb to 4000 direct LAYKI and on track 267° to SEEMS and hold, continue climb-in-hold to 4000.	
AWOS-3 127.275	NORCAL APP CON 135.1 307.2	UNICOM 122.8 (CTAF) 0



ELEV 66	TDZE 54
REIL Rwy 30 0	MIRL Rwy 12-30 0

4000	LAYKI	tr 267°	SEEMS	VGSi and RNAV glidepath not coincident (VGSi Angle 3.00/TCH 24).	
*LNAV only		MAVKC 5.2 NM to RW30	WOHLI	JUMDA	
*1.8 NM to RW30		3300	3800	302°	GP 3.50° TCH 40
1.8 NM		3.4 NM	3.4 NM	5.9 NM	
CATEGORY	A	B	C	D	
LPV DA	381-1 327 (400-1)				
LNAV MDA	620-1 566 (600-1)		620-1½ 566 (600-1½)		

SW-2, 23 JAN 2025 to 20 FEB 2025

SW-2, 23 JAN 2025 to 20 FEB 2025