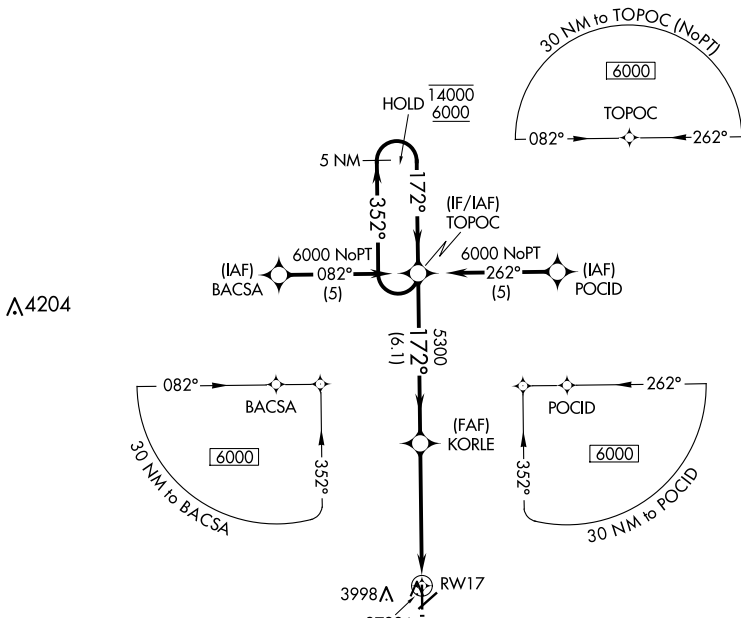


| | |
|------------------------|-------------------------|
| APP CRS 172° | Rwy Idg 4907 |
| TDZE 3619 | Apt Elev 3622 |

RNAV (GPS) RWY 17

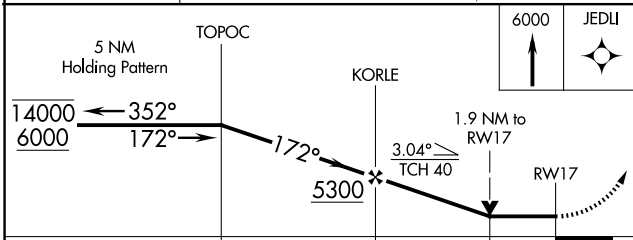
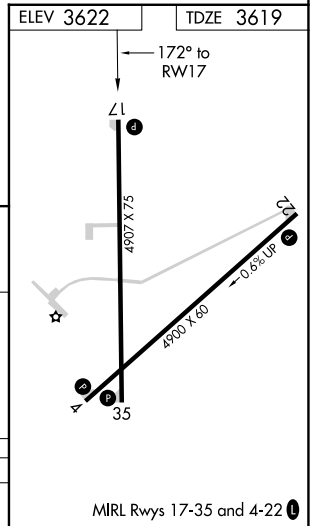
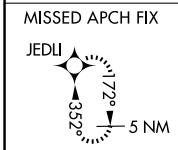
ELKHART-MORTON COUNTY (EHA)

| | | |
|---|--|---|
| RNP APCH-GPS. | | MISSED APPROACH: Climb to 6000 direct JEDLI and hold. |
| Rwy 17 helicopter visibility reduction below 3/4 SM NA. | | |
| AWOS-3P 118.025 | KANSAS CITY CENTER 134.0 257.625 | UNICOM 122.8 (CTAF) 0 |



NC-2, 23 JAN 2025 to 20 FEB 2025

NC-2, 23 JAN 2025 to 20 FEB 2025



| | | | | |
|----------|--------|-------------|-------------------------------|----|
| CATEGORY | A | B | C | D |
| LNAV MDA | 4240-1 | 621 (700-1) | 4240-1 3/4 621 (700-1 3/4) | NA |