

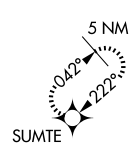
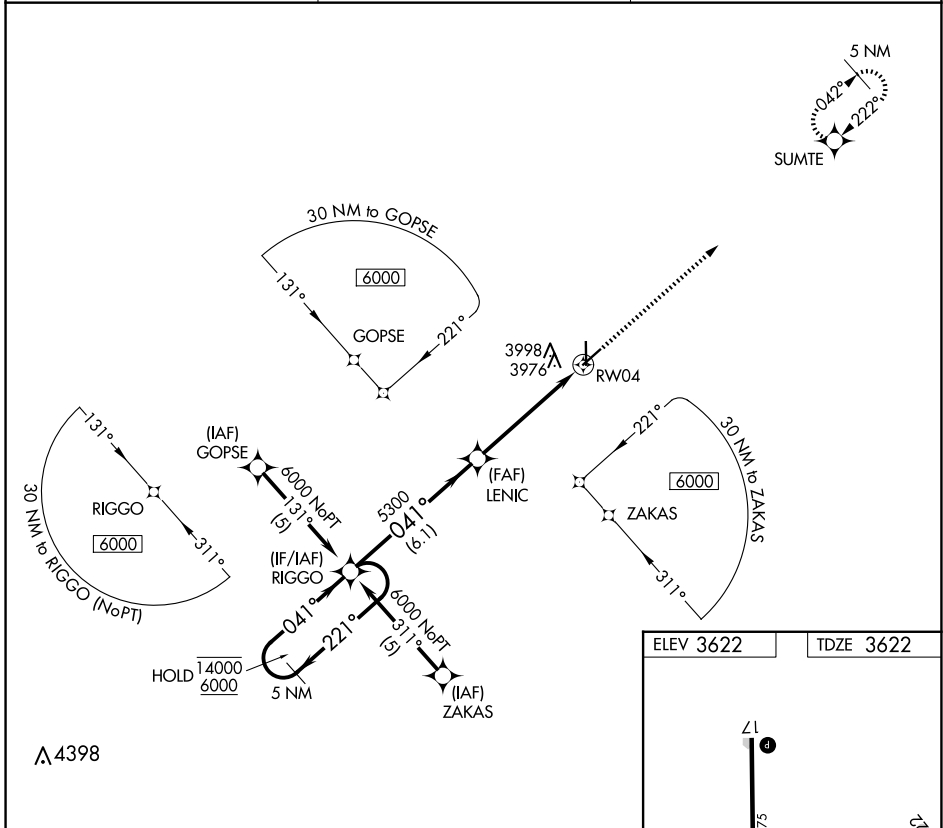
RNAV (GPS) RWY 4

ELKHART-MORTON COUNTY (EHA)

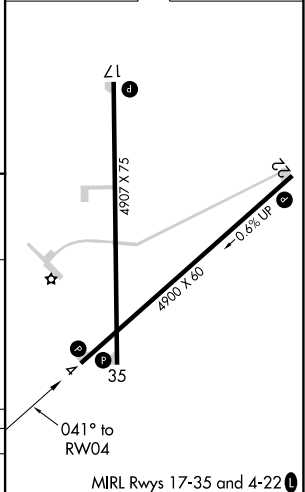
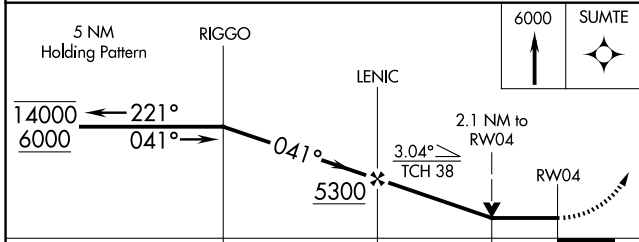
APP CRS 041°	Rwy Idg 4900
	TDZE 3622
	Apt Elev 3622

RNP APCH-GPS.	MISSED APPROACH: Climb to 6000 direct SUMTE and hold.
Rwy 4 helicopter visibility reduction below 3/4 SM NA.	

AWOS-3P 118.025	KANSAS CITY CENTER 134.0 257.625	UNICOM 122.8 (CTAF) 0
---------------------------	--------------------------------------------	---------------------------------



ELEV 3622	TDZE 3622
-----------	-----------



CATEGORY	A	B	C	D
LNAV MDA	4340-1	718 (800-1)	4340-2	718 (800-2)

NC-2, 23 JAN 2025 to 20 FEB 2025

NC-2, 23 JAN 2025 to 20 FEB 2025