

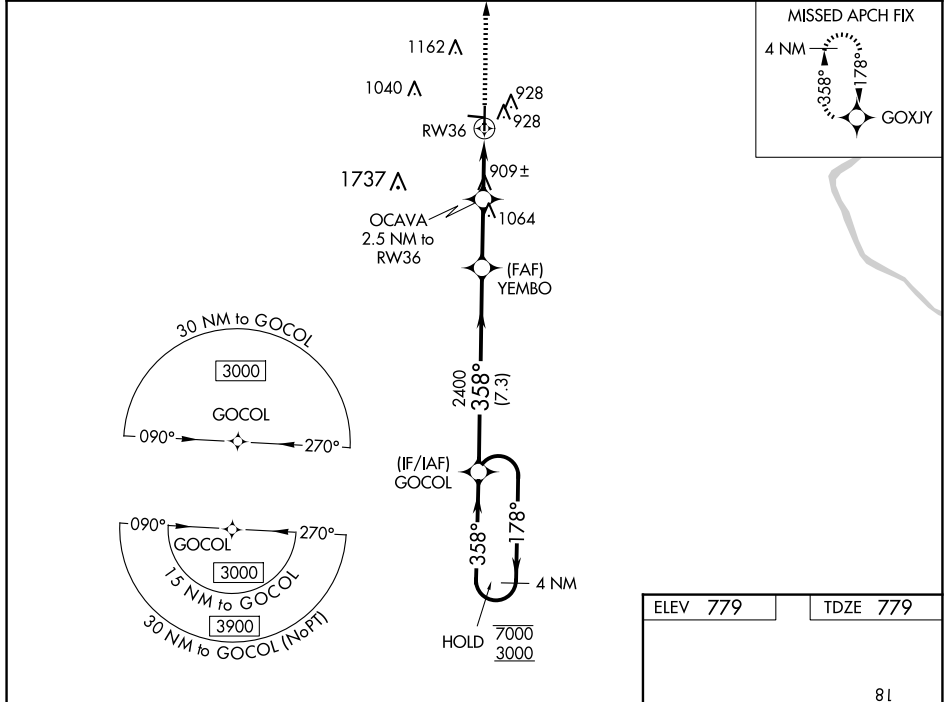
WAAS CH <b>93907</b> <b>W36A</b>	APP CRS <b>358°</b>	Rwy Idg <b>5005</b> TDZE <b>779</b> Apt Elev <b>779</b>
--	------------------------	---

# RNAV (GPS) RWY 36

MARSHALL MEML MUNI (MHL)

RNP APCH.	MISSED APPROACH: Climb to 3000 direct GOXJY and hold.
<p><b>▼</b> Circling NA to Rwys 9 and 27. For uncompensated Baro-VNAV systems, LNAV/VNAV NA below -16°C or above 54°C.</p>	

AWOS-3PT <b>118,675</b>	WHITEMAN APP CON ★ <b>127.45</b>	UNICOM <b>122.8 (CTAF) 0</b>
----------------------------	-------------------------------------	---------------------------------



NC-3, 23 JAN 2025 to 20 FEB 2025

NC-3, 23 JAN 2025 to 20 FEB 2025

4 NM Holding Pattern		VGSI and RNAV glidepath not coincident (VGSI Angle 3.04/TCH 36)		3000	GOXJY
<p>7000 ← 178°</p> <p>3000 → 358°</p> <p>GP 3.00° TCH 40</p>		<p>2400</p> <p>YEMBO</p> <p>OCAVA 2.5 NM to RW36</p> <p>*1.1 NM to RW36</p> <p>*1600</p>		*LNAV only	
<p>7.3 NM</p> <p>2.5 NM</p> <p>1.4</p> <p>1.1</p>					
CATEGORY	A	B	C	D	
LPV DA		1029-1	250 (300-1)	NA	
LNAV/VNAV DA		1091-1	312 (400-1)	NA	
LNAV MDA	1160-1	381 (400-1)	1160-1½ 381 (400-1½)	NA	
CIRCLING	1260-1	481 (500-1)	1480-2 701 (800-2)	NA	

