

APP CRS 091°	Rwy Idg 4000
	TDZE 836
	Apt Elev 842

RNAV (GPS) RWY 9

VINTON VETERANS MEML AIRPARK (VTI)

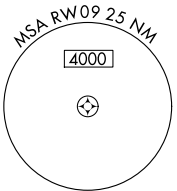
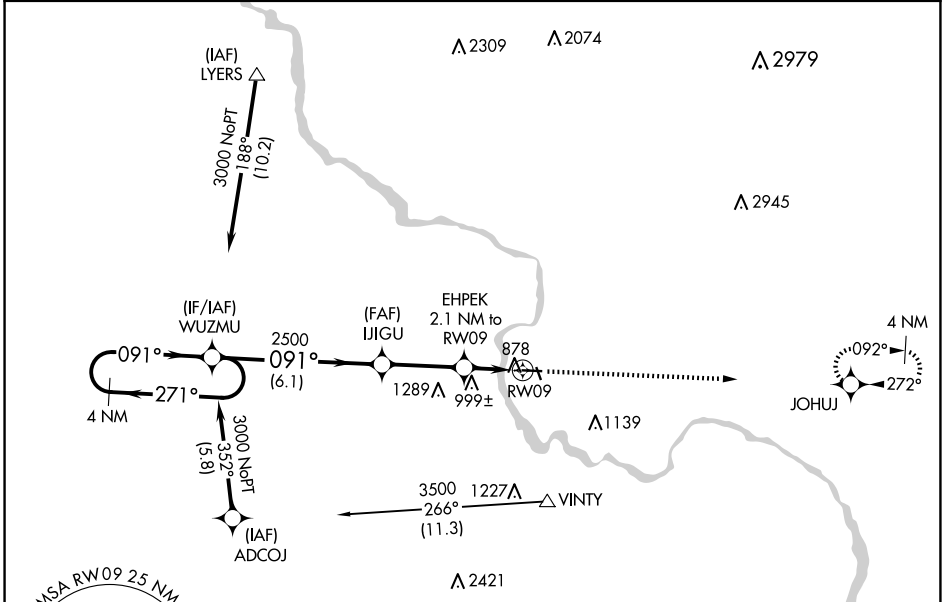
RNP APCH - GPS.

▼ Straight-in Rwy 9/ Circling Rwy 9 at night, operational VGSI required, remain on or above VGSI glidepath until threshold. Rwy 9 helicopter visibility reduction below 1 SM NA.

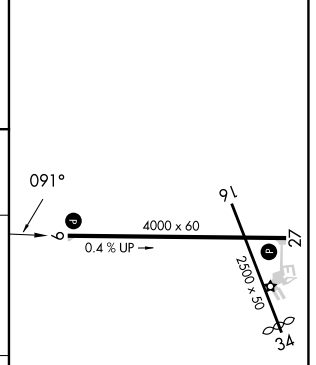
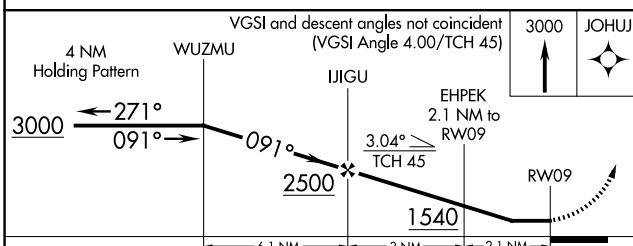
▲ When local altimeter setting not received, use Independence altimeter setting and increase all MDA 60 feet.

MISSED APPROACH: Climb to 3000 direct JOHUJ and hold.

AWOS-3 120.075	CEDAR RAPIDS APP CON * 134.05 266.8	UNICOM 122.8 (CTAF)
--------------------------	-----------------------------------------------	-------------------------------



ELEV 842	TDZE 836
----------	----------



CATEGORY	A	B	C	D
LNVA MDA	1260-1	424 (500-1)		NA
CIRCLING	1320-1 478 (500-1)	1360-1 518 (600-1)		NA

REIL Rwy 9 and 27
MIRL Rwy 9-27

NC-3, 23 JAN 2025 to 20 FEB 2025

NC-3, 23 JAN 2025 to 20 FEB 2025