

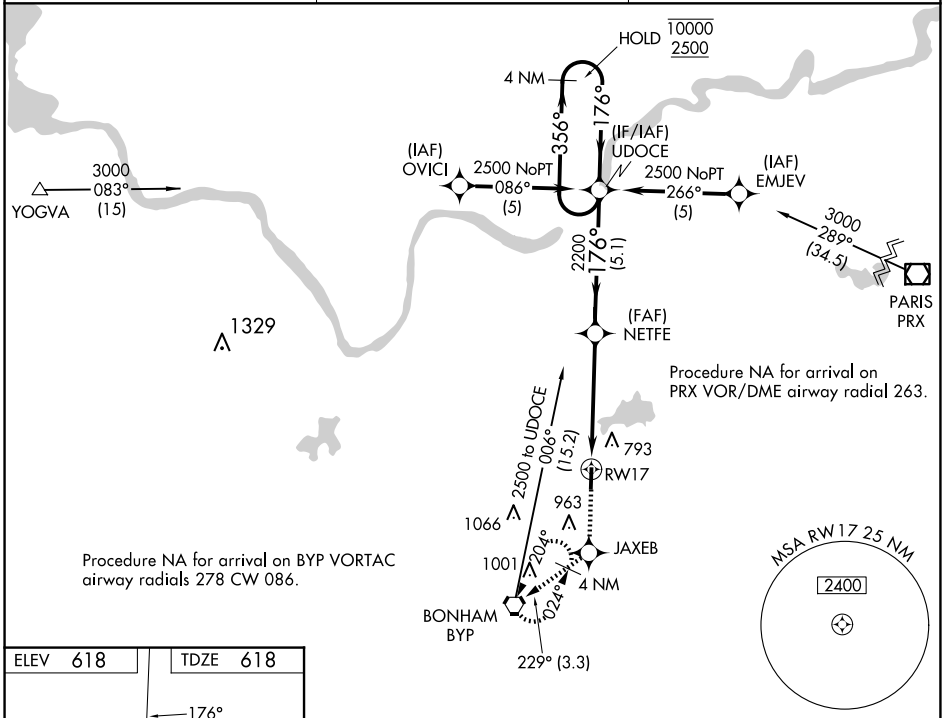
WAAS CH 99523 W17A	APP CRS 176°	Rwy Idg TDZE Apt Elev	4000 618 618
----------------------------------------	------------------------	-----------------------------	-----------------------------------------

RNAV (GPS) RWY 17

JONES FLD (F00)

RNP APCH - GPS.	MISSED APPROACH: Climb to 2500 direct JAXEB and on track 229° to BYP VORTAC and hold.
<p>▼ Rwy 17 helicopter visibility reduction below 1 SM NA. Baro-VNAV NA.</p> <p>▲ When local altimeter setting not received, use Durant altimeter setting.</p>	

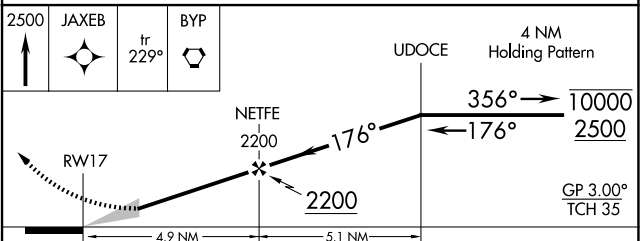
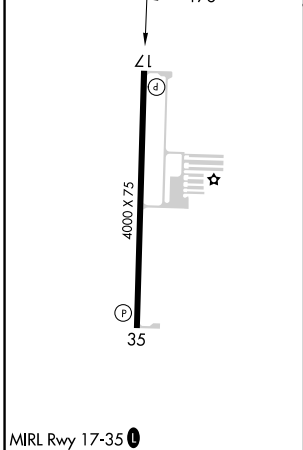
AWOS-3 PT 118.05	FORT WORTH CENTER 127.6 254.3	UNICOM 122.8(CTAF)
----------------------------	-----------------------------------------	------------------------------



Procedure NA for arrival on BYP VORTAC airway radials 278 CW 086.

Procedure NA for arrival on PRX VOR/DME airway radial 263.

ELEV 618	TDZE 618
----------	----------



CATEGORY	A	B	C	D
LPV DA	906-1	288 (300-1)		NA
LNAV/VNAV DA	1030-1½	412 (500-1½)		NA
LNAV MDA	1180-1	562 (600-1)		NA
CIRCLING	1240-1 622 (700-1)	1400-1 782 (800-1)		NA

SC-2, 23 JAN 2025 to 20 FEB 2025

SC-2, 23 JAN 2025 to 20 FEB 2025