

APP CRS <b>355°</b>	Rwy Idg <b>3007</b>
	TDZE <b>1085</b>
	Apt Elev <b>1092</b>

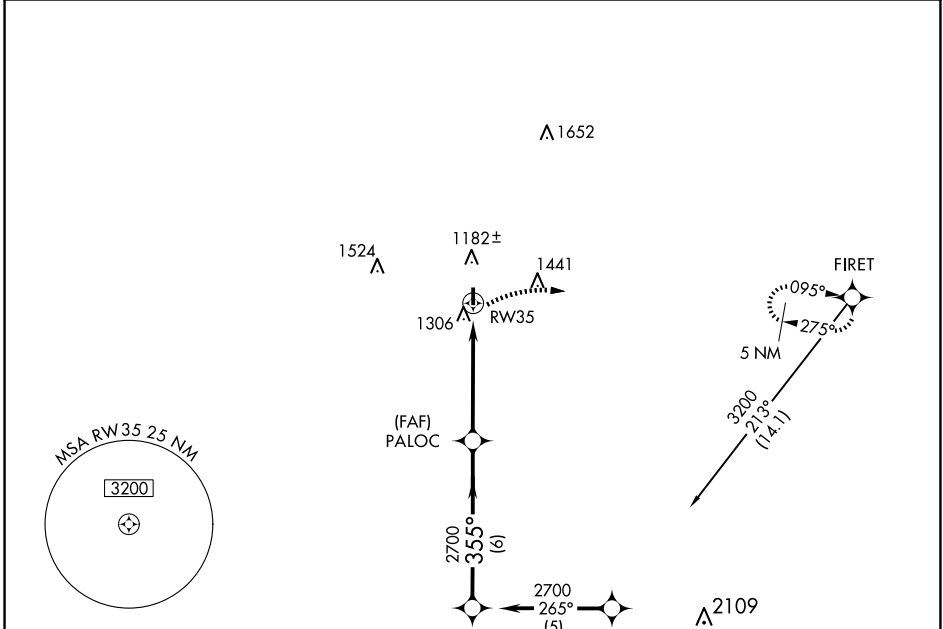
# RNAV (GPS) RWY 35

MEDFORD MUNI (O53)

RNP APCH. MISSED APPROACH: Climbing right turn to 5000 direct FIRET and hold.

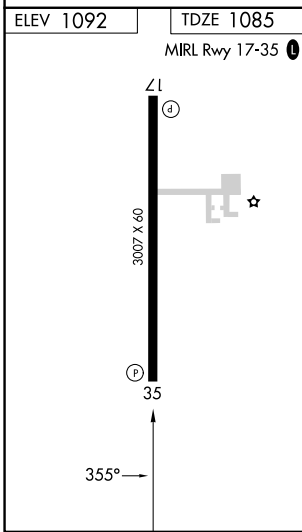
▲ NA Use Ponca City Rgnl altimeter setting. Procedure NA at night.

PNC ASOS <b>134.075</b>	VANCE APP CON* <b>118.075 273.475</b>	UNICOM <b>122.8 (CTAF)</b>
----------------------------	--	-------------------------------



SC-1, 23 JAN 2025 to 20 FEB 2025

SC-1, 23 JAN 2025 to 20 FEB 2025



5000	FIRET	PALOC	INERE	Procedure Turn NA
RWY 35		VGSi and descent angles not coincident (VGSi Angle 3.51/TCH 33).		
4.9 NM		6 NM		
CATEGORY	A	B	C	D
LNAV MDA	1700-1¼	608 (700-1¼)	NA	
CIRCLING	1740-1¼ 648 (700-1¼)	1840-1¼ 748 (800-1¼)	NA	